



Member of the Surbana Jurong Group



# SMEC Foundation

Annual Report  
2022



Connecting and uplifting communities.

# Content



West Sumatera Earthquake, Indonesia

**07** | Chairman's Foreword

**08** | SMEC Foundation Board

**09** | Overview

**10** | Projects

**19** | Emergency Relief Assistance

**20** | Corporate Social Responsibility

**21** | Divisional CSR Committees

**“Our philosophy has always been that a little money spent wisely can go a long way.”**

- Roger Bayliss – Chairman, SMEC Foundation



## Chairman's Foreword

2022 delivered more challenges than anyone could have anticipated. The post-COVID period provided some relief, but Russia's invasion of Ukraine produced many ongoing side-effects, especially food shortages and price inflation, as well as a complex mix of political tensions.

Climate change added to the issues facing developing countries. Cyclones, floods and fires resulted in massive dislocation to communities. We witnessed many towns and villages being ravaged by abnormal weather patterns. Providing support and relief at these times has challenged the international development community to levels previously not witnessed.

The SMEC Foundation will respond to these challenges, but our impact is limited compared to the massive issues so many disadvantaged communities are facing. As always, we will continue to direct our limited resources to provide an uplift to living standards in communities where we can truly make a difference.

The SMEC Foundation's blend of cash grants to Australian DGR charities, augmented by SMEC Divisional funds and the enthusiastic commitment of our people is a proud combination that few Australian corporations can deliver.

SMEC Foundation programs continue to be directed to projects in the Indo-Pacific and Africa. We are proud to have established excellent working relationships with 23 trusted charity partners. We take this opportunity to recognise the ongoing role these charities play in delivering essential services in education, water supply, roads and health.

During 2022 several SMEC alumni and their families have joined with us in co-funding projects. This level of support has significantly extended our efforts and created a powerful project delivery model. The Foundation Board sincerely thanks these donors for their active engagement in our programs.

Foundation projects are guided and supported by SMEC staff in over 40 countries. The board relies on staff to identify philanthropic opportunities and then provides assistance throughout the delivery of the project. They are a crucial and essential element in the Foundation's operations.

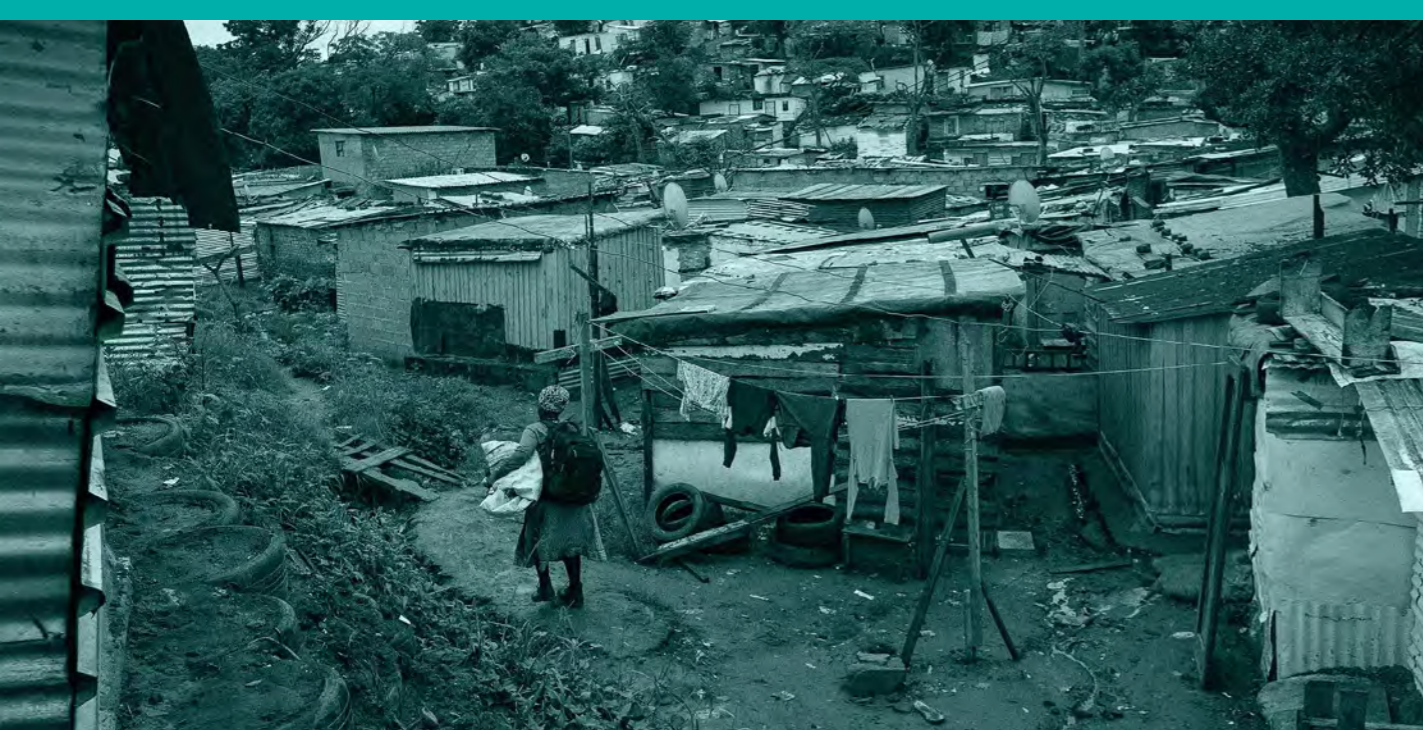
A small, but critical Foundation activity is the Emergency Relief Assistance program. This fund provides instant cash in hand to SMEC staff who have been affected by natural disasters. The cash can be used for items such as shelter, water, food, medicines, baby formula and other essentials when disaster strikes. This fund relies on cash donations from SMEC staff, often through social and other events to ensure the fund remains well supported.

We look forward to another year of helping communities in need.



**Roger Bayliss**

- Chairman, SMEC Foundation



# Overview

**21**  
years

**\$1.58**  
\$AUD million donated

**230+**  
projects completed

**30+**  
countries

This year the SMEC Foundation celebrated a remarkable achievement, as it marked its 21st anniversary of operations. For 21 years, the Foundation has been connecting and uplifting communities with an aim to bring positive change to people's lives and empower them to thrive. Our unwavering and deep commitment to social responsibility has enabled the use of our resources and expertise to provide aid and support to underprivileged communities and make an impact on the areas in which SMEC operates.

We have continuously adhered to our philosophy of 'a little money spent wisely can go a long way,' and over the years the Foundation has raised an impressive \$1.58 million, which has been utilised to complete over 230 projects in more than 30 countries around the world.

With a focus on sustainable, community-led solutions, the SMEC Foundation supported nine key projects around the world in the areas of education, healthcare, and economic development. Our projects and initiatives enabled local communities to take charge of their development and leave a lasting legacy of positive change for future generations.

As we celebrate this milestone, we reflect on the many achievements and the challenges we have overcome having emerged stronger and more resilient. The Foundation's dedication aimed at fostering meaningful relationships, empowering others, and making a positive impact in the world has enabled us to adapt and thrive, even in the face of adversity.

Five of these projects are now completed, with two expected to be completed in 2023. These projects are a testament to the resilience, innovation, and dedication of all involved, and we are deeply grateful to the passionate and committed employees, charity partners, and alumni who have transformed lives and contributed to our ongoing success.

It is because of our agility and commitment, together with our charity partners, alumni partners, and local SMEC teams, that we continued to ensure our work was responsive to the needs of the communities in 2022.

We look forward to continuing our journey of growth, positively impacting the world and inspiring others to join in our efforts of building a better future for all.



# SMEC Foundation

## Board

The SMEC Foundation is a core part of SMEC's Corporate Social Responsibility (CSR) program. The board is responsible for advancing the CSR program by setting the Foundation's strategic direction, establishing policies and procedures, and monitoring the Foundation's progress towards its goals.

By fulfilling their roles and responsibilities effectively, the SMEC Foundation Board continues to make a positive impact in our communities and advance the common good.



**Roger Bayliss**  
Chairman



**Karen Atkinson**  
Director



**Phillip Wilcox**  
Director



**Suzanne Gibbs**  
Director

The board would like to acknowledge the retirement of our esteemed colleague and board member, Angus Macpherson. His dedication and leadership have been invaluable to the success of the Foundation, and his contributions will be greatly missed. We are grateful for the time and effort Angus had put into serving on the board and wish him all the best in their future endeavours.



## Indian Drilled Well Program

COMPLETED



**Charity Partner**  
BridgIT Water  
Foundation



**SMEC Alumni**  
McKendrick  
Family



**Location**  
India

### The project provides:

- crucial water infrastructure including seven bore wells and hand pumps
- sustainable, community-managed water supply to seven rural villages
- improved hygiene and sanitation practices
- convenient access to safe, clean water for 1,653 households and 7,106 Dalit people.

Our charity partner, BridgIT Water Foundation strongly believes that water is the foundation of all sustainable development, and there is no better investment than to give clean water to those who urgently need it. The Indian Drilled Well Program aims to create sustainable, community-managed water supply for the Dalit people in target rural villages.

In the Chittoor District of Andhra Pradesh, India, 86% of the population lives in rural areas, and 40% live below the poverty line. In marginalised Dalit communities, less than 20% of people have access to protected water. The lack of access to clean water means local communities rely on village ponds

for drinking and cooking water, otherwise facing kilometres of travel to the nearest clean water source.

The SMEC Foundation, along with SMEC India, BridgIT Water Foundation Australia, and alumni partners the McKendrick Family, funded the Indian Drilled Well program, which provided seven villages with crucial water infrastructure for sustainable development within the region.

The scope of works included hydro-geological surveys and bore siting, mechanical drilling, and platform construction to deliver boreholes and hand pumps. The project design was participatory in approach, directly involving each of the beneficiary communities.

Water projects such as the Indian Drilled Well Program provide long-term, sustainable benefits to the recipient communities. They allow for safe, clean water access and a reduction in water-borne diseases. Local water-use-committees provide long term socio-economic benefits, gained through asset maintenance and WASH awareness training.

The project was implemented by BridgIT Water Foundation's Indian partner, the Society for Rural Health, Education, and Development.



## Projects

### School Kitchen Storeroom Project

IN PROGRESS



**Charity Partner**  
Action on Poverty



**SMEC Alumni**  
Busbridge Family  
Benevolent Fund



**Location**  
Zambia

### The project will:

- provide four large storerooms
- improve functionality of the school feeding program
- enhance nutrition education and school kitchen management
- improve hygiene, and food handling practices
- positively impact on the retention and learning outcomes for more than 2,500 students.

The SMEC Foundation has been an invaluable supporter of Action on Poverty (AoP) since 2020. AoP has programs that target the root cause of poverty and works with organisations to increase access to food, water, health care, and education, providing long-term socio-economic solutions for communities.

The School Kitchen Storeroom Project was funded by the SMEC Foundation and Busbridge Family Benevolent Fund, facilitated by AoP, and implemented by Self Help Africa. The project is part of the Home-Grown School Meals Project, supported by

the World Food Programme and the Government of the Republic of Zambia aiming to reduce hunger and improve nutrition among school students by providing more diverse and nutritious food.

Four schools across Central Zambia were identified as needing new kitchen storerooms to enhance nutrition education, school kitchen management, and improve hygiene and food handling practices.

The storerooms were constructed adjacent to existing kitchens to address the critical lack of storage space. These facilities are necessary for the storage of cooking utensils as well as non-perishable foods such as maize meal, pulses, and to some extent, vegetables. Until now kitchen equipment and food has had to be stored in classrooms or even the head teachers office, so the new storage spaces will significantly improve kitchen operations and hygiene.

The four schools that participated in the project were Kansangwa, Mwambanzovu, Nsangano and Sala primary schools.

With the Foundation's support, these upgrades significantly improved the functionality of school kitchens and feeding programs at these locations and are expected to positively impact the retention and learning outcomes of over 2,500 students.



## School Infrastructure Project – Classroom Construction

IN PROGRESS



**Charity Partner**  
So They Can



**SMEC Alumni**  
Busbridge Family  
Benevolent Fund



**Location**  
Tanzania

### The school infrastructure project will provide:

- eight built and renovated classrooms and two offices
- improved educational infrastructure at three primary schools
- safe and inclusive learning environment to over 540 students.

The education program STC runs in Tanzania is situated in the Babati district, Manyara region. Common challenges faced by schools in the region include inadequate infrastructure, poor sanitation, limited access to clean water and poor quality educational resources.

The School Infrastructure Project will construct and renovate learning and teaching rooms in three program-supported primary schools as part of an initiative to equip primary schools with infrastructure and resources to create safe and engaging school environments. Two new classrooms and one office are planned at Ayamango Primary School. Renovations are also planned for two classrooms and an office at Gijedabung Primary School and four classrooms at Hallu Primary School.

So They Can (STC) is focused on changing the future of children and communities living in poverty through education, believing it's one of the best routes to sustainable change for children.

While working alongside the SMEC Foundation and Busbridge Family Benevolent Fund, STC aims to provide quality education to children in Africa living in poverty through improved learning conditions, training, and development.

At the end of 2022, major construction at two of the primary schools was completed, with the completion of renovations for the third school subject to additional government funding.



## Lora Miana Water Project

COMPLETED



**Charity Partner**  
Shahid Afridi  
Foundation



**SMEC Alumni**  
Ids Groenhout



**Location**  
Pakistan

### The water filtration project provides:

- fundamental water infrastructure including a water well, pump, and overhead tank with pipelines
- un-interrupted access to water for domestic use and farming lands
- improved water, sanitation, and hygiene services to 2,000 households in Lora Miana
- benefits to over 4,000 households and adjoining communities with an average family size of 8.5.

Our charity partner, Shahid Afridi Foundation (SAF) is a non-profit organisation in Pakistan that aims to improve the conditions of the underprivileged communities of our society and create sustainability through five initiatives of Education, Healthcare Services, Access to Water, Sports Rehabilitation, and Emergency Relief Response.

Together with SMEC alumni Ids Groenhout and SAF, we were motivated to enhance the lives of residents in Lora Miana, through the provision of critical water infrastructure.

Lora Miana is a village in the Tehsil province of Pakistan. Most community members are farmers or marble factory workers, who rely on the marble factories for their livelihood and earn an average of just US\$75 per month salary.

Unfortunately, poor drainage systems and improper waste dumping in villages of Pakistan are the main sources of drinking water contamination. In Lora Miana, the community depends on contaminated well water and irrigation systems to meet their daily water needs. The main source of contamination is waste that is derived from a nearby factory, with the prevalence of arsenic and pollution making the water unfit for drinking.

To provide consistent and safe drinking water, a solar powered filtration plant was constructed. The solar panels reduce operational costs on the local community as well as environmental impacts. The newly built plant will encourage the community to adopt healthy habits, provide safe drinking water, and protect the more vulnerable members from the risks of water-related hazards.



## School Infrastructure Project – Girls Changing Rooms

IN PROGRESS



**Charity Partner**  
So They Can



**SMEC Alumni**  
Busbridge Family  
Benevolent Fund



**Location**  
Tanzania

### The school infrastructure project will provide:

- five new changing rooms at five primary schools
- focus on delivering an inclusive education for all students
- separate showers, toilets and sanitation facilities for girls and boys
- safe, and hygienic spaces for over 1,390 girls to change.

With continued support from the Busbridge Family Benevolent Fund, the SMEC Foundation, again partnered with So They Can to further improve the educational infrastructure in local government primary schools by adding new changing rooms for girls.

Throughout Africa, girls are less likely than boys to be enrolled in school, and these differences are particularly large after puberty.

One in ten schoolgirls in Africa miss classes or drop out completely due to menstruation. In Tanzania, young girls often miss on average five learning days every month due to limited access to sanitary products and inadequate school infrastructure such as a lack of toilets and changing rooms and limited or no water supply.

Five changing rooms are being built across five different primary schools, with a focus on creating an inclusive education among students. These change rooms will provide safe, hygienic spaces for girls to change so they no longer miss out on days of school. These reserved spaces will further support girls with health education and raise community awareness of the importance of girls' education.

Construction of the changing rooms at each school commenced in 2022 and each project is being carried out with community engagement and participation - including the contribution of local materials such as gravel, sand, and stone for use in construction.

## Outdoor Learning Project

COMPLETED



**Charity Partner**  
Australian Foundation  
for Fostering Learning  
in the Philippines



**Location**  
Philippines

### The outdoor multipurpose learning facilities provide:

- 13 schools with outdoor furniture sets
- enhanced student learning through teaching games and maths concepts, reading, and learning through play activities
- professional development programs for Filipino teachers and administrators
- support to over 21,000 children across 15 schools in the Southern Philippines.

In the Southeast Asia and Pacific region, the SMEC Foundation supported the Australian Foundation for Fostering Learning in the Philippines (AAFLIP) in an initiative as part of its flagship Outdoor Learning program.

The Learning in the Outdoor Environment program focuses on enhancing student learning through formal and informal curricula. Learning through play

has been greatly enhanced by the provision of structures and learning resources in school yards which until recently were quite bare and unappealing. There was also a lack of outdoor tables and seating appropriate for teaching and learning outside the formal classroom.

The SMEC Foundation funded the establishment of Multipurpose Outdoor Learning Domain (MOLD) initiatives across 13 elementary schools, including one special needs school. MOLD is an outdoor learning area comprised of heavy-duty tables and seating that can be used for the teaching of games and maths concepts, reading and learning through play activities and outdoor group work. Two additional schools received a sandpit and drum tunnel for play, and a box-type tunnel and overpass.

Parents, teachers, and the community were all involved in the implementation of each of the 15 projects across the schools. The Outdoor Learning Project will make a significant difference in enhancing learning opportunities, supporting over 21,000 children across 15 schools in the Southern Philippines.





## Water for Women Project

COMPLETED



### The new WASH facilities will:

- strengthen community resilience and inclusion
- provide adequate safe water supplies and sanitation for the surrounding communities where the schools are located
- provide improved water, sanitation, and hygiene (WASH) for over 370 students and teachers in three schools.

The SMEC Foundation partnered with Habitat for Humanity Australia and Fiji to strengthen community resilience and inclusion through improved water and sanitation hygiene (WASH) services. The initiative was part of Habitat for Humanity's Water for Women Project, which aims to improve WASH services in 18 Fijian communities including 11 schools.

The Water for Women Project identified several infrastructure interventions to offer a clean and reliable water supply and improved sanitation facilities at under resourced schools. Three schools, Namuanivaqa, Tataiya and Turagarua primary schools were marked as priorities where the main source of water is surface creek water and rainwater.

This water is susceptible to contamination due to a lack of protective cover or prone to water shortage and low pressure during the dry season.

Funding from the Foundation directly improved water and sanitation infrastructure among these three schools. A new rainwater harvesting system (consisting of water tanks, concrete tank bases, guttering, downpipes, and fittings) was constructed, with the provision of a classroom ceramic water filter and a compost toilet for each learning centre. The Tataiya and Turagarua schools required additional infrastructure including a borehole infrastructure, menstruation health management facilities, standpipes and handwashing stations, and repairs to toilets. The new facilities will also provide adequate safe water supplies and sanitation for the surrounding communities where the schools are located.

Community members, including teachers and students, were engaged in the project planning and implementation as well as in the training sessions to promote behavioural changes around WASH.

To encourage ownership and engagement whilst promoting gender inclusivity, local community volunteers including women were selected to assist in the construction.

## IT Lab Nowshera Campus

COMPLETED



### The new IT lab:

- comprises of 15 desktop systems, new furniture, a server, and associated power networking
- uses a new 8kW solar panel (separately funded by SAF)
- provides access to information technology for over 300 students and teachers
- hired a qualified computer instructor.

The school previously did not have access to information or digital technology. With the assistance of the regional SMEC team in Pakistan, the SMEC Foundation collaborated with SAF on the construction of the IT lab.

Students will be provided with quality education, through extending information technology services as part of the national curricula. The computer lab comprises of 15 desktop systems, along with comfortable furniture for students and teachers. The technology has learning software installed which will provide basic knowledge and enhance student's IT skills and capabilities. A qualified computer instructor has also been hired under the program.

With the support of the SMEC Foundation, the Shahid Afridi Foundation (SAF) has constructed an IT Lab at its Nowshera Campus to help realise the full benefits of technology in the education system. SAF believes schools should be incubators of exploration and invention with a vision to build conducive learning environments to ensure a progressive tomorrow for our upcoming youth.

The project was completed and inaugurated by the local SMEC Pakistan team in April 2022.





# Emergency Relief Assistance



Mother Nature can be quite unpredictable and 2022 was no different, from catastrophic flooding to destructive typhoons and devastating earthquakes. We know that within SMEC there were many employees and their families affected by these natural disasters, and our sympathies are with them during these difficult times.

The region further suffered with two typhoons ripping through the Philippines, leaving behind a trail of destruction. Sadly, our SMEC employees were among those affected. Through the Emergency Relief Assistance program, our people received direct support to alleviate distress and enable essential repairs to their homes and damaged property.

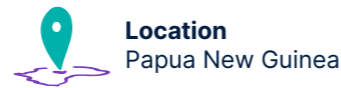
Pakistan experienced severe flooding in the Jamshoro Sindh region with over 170 households impacted in the Gorth Arazai Kalhoro village. Alongside charity partner Shahid Afridi Foundation, the SMEC Foundation participated in a live telethon to benefit Pakistan flood victims. A much needed donation of \$10,000 was made by the Foundation for the rehabilitation and rebuilding of houses for flood-affected Pakistani people.

Every day we strive to create and connect communities that make a difference in people's lives including our employees. Through the SMEC Foundation, we are proud to have offered support to our employees in times of emergency and crisis situations by providing crucial support financially and on the ground. But, more than ever, we are grateful for our people and community, their generosity and action orientation which has been priceless to families, communities, and villages needing immediate assistance in times of dislocation and hardship. It is also because of our employee's tremendous and continuous support in times of need, that SMEC can be there for our people in the aftermath of a natural disaster.

The Pacific region was battered by typhoons and earthquakes. In Indonesia we partnered with HSI Peduli, to provide emergency relief supplies and other necessities for earthquake victims in West Pasaman Regency, West Sumatra Province. The donation benefited over 1,500 individuals living in two of the worst-hit villages.

## Wom Water Project

IN PROGRESS



### The project will:

- improve access to resilient water supply for the community
- allow visitors to the public beach access to a safe drinking water supply
- train a WASH committee to operate, maintain and manage the water supply system
- provide over 90 households with safe drinking water during the dry season.

funded through DFAT's Water for Women fund. Helping to improve WASH service delivery in the Wewak District has contributed to the achievement of Papua New Guinea's National WASH Policy 2015-2030.

Phase 1 consisted of drilling and construction of a bore well to benefit 350-500 people. An elevated water storage tank with a solar pump and community tap stand will also be installed. A committee will be trained to maintain and manage this system and complete refresher community training on WASH behaviours.

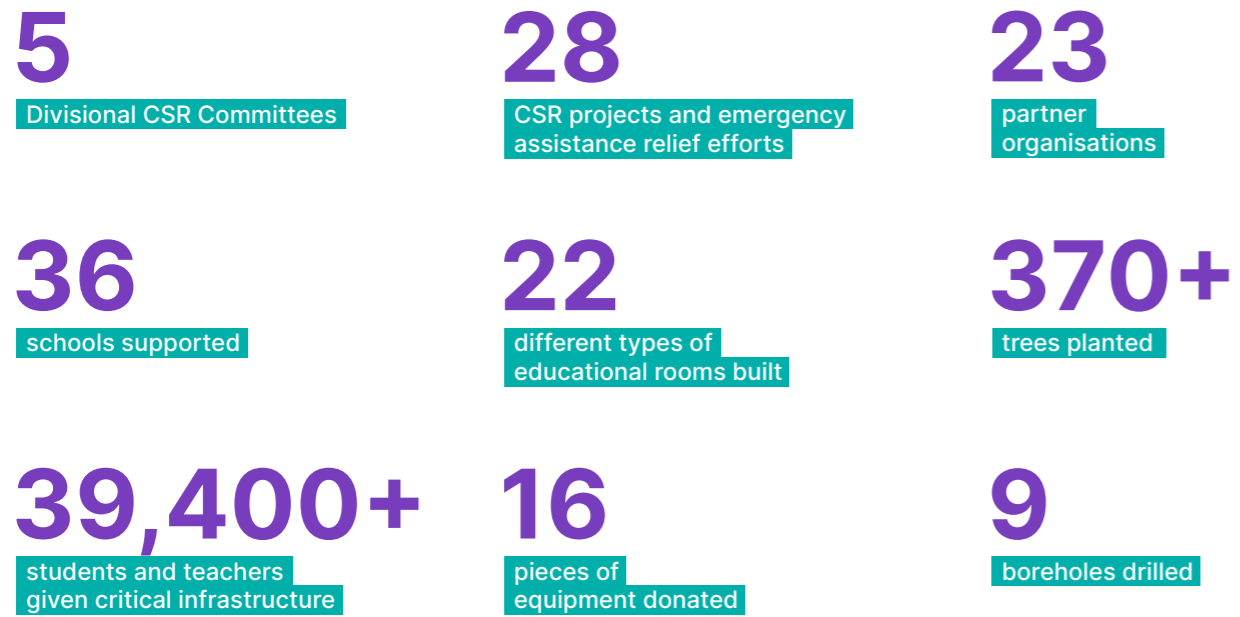
This development created a blueprint that other districts in Papua New Guinea can utilise to improve WASH services and management. In the Wom village, over 90 households and all visitors to the public beach now have safe, resilient drinking water.

WaterAid is expected to complete the final construction for the water supply system, run final operations and maintenance training with the WASH Committee in mid-2023.

Supported by Busbridge Family Benevolent Fund, the SMEC Foundation helped improve access to WASH services through a pilot community in Wom village and public beach. The peak demand across the village and beach is estimated to be 35,000 litres per day.

As part of WaterAid's Inclusive WASH for Wewak District program, this project is being delivered in partnership with the Governor of Wewak, and

# Corporate Social Responsibility



At SMEC, we have developed a comprehensive Corporate Social Responsibility (CSR) framework that reflects our core values and guides our daily work. Our CSR framework focuses on three key areas: People, Community, Sustainability, and Environment.

We believe that by prioritising these areas, we can create a positive impact on society and contribute to a more sustainable future. Our commitment to People involves promoting a safe and inclusive work environment that fosters growth and development. In the Community, we aim to support local initiatives and give back to those in need through volunteerism and charitable giving. Sustainability and Environment are at the forefront of our business practices, and we strive to reduce environmental impacts and promote sustainable practices throughout our operations. Our CSR framework is an integral part of our organisational culture, and we are committed to upholding these values in everything we do.

# Divisional CSR Committees

To enhance CSR activities across our global operations, the Divisional Corporate Social Responsibility (D-CSR) Committees play a crucial role in guiding SMEC's CSR strategy. Established under the SMEC Foundation brand and acting in an advisory capacity, the D-CSR Committees proactively develop and implement regional CSR programs and activities.

Committees oversee projects funded from both Divisional CSR budgets and SMEC Foundation, delivered through trusted charity partners with an on-the-ground presence, and include a high degree of ownership and engagement by locally based SMEC employees. Through their proactive approach, the Committees make a meaningful impact on the community and environment in which we operate, creating and connecting communities for future generations to thrive.

## AMERICAS

At SMEC Americas we are challenging ourselves by creating a new initiative called Women in SMEC (WSMEC). Established in 2022, WSMEC is a young professionals training program focused on diversity and inclusion, specifically aiming to incorporate more women into the mining consulting industry.

In the first two months of the program, 11 participants went through technical and practical training, with 95% of the participants entering the mining job market. After the success of the initial group, a further 25 young people from five universities completed the program. Currently, most of these young professionals are applying their skills to projects at SMEC.

2023 will see us launching our third round of intakes, where we seek to continue redefining exceptional and contribute to the development and education of young professionals alongside our SMEC industry experts.





## AUSTRALIA AND NEW ZEALAND

At SMEC, we understand the culture and communities we exist within are critical to our business and in 2022 SMEC ANZ was immensely proud to have continued our commitment to positively impacting the community around us. To ensure our business focus was on four key areas, people, community, sustainability and environment, several initiatives were implemented throughout the year.

We were delighted to continue our charity partnerships with the Community Spirit Foundation, Engineering Aid Australia, The Cycling Development Foundation, Habitat for Humanity, and the Indigenous Literacy Foundation. We also welcomed a new charity partner from New Zealand and look forward to further collaborating with First Foundations in 2023.

Through these partnerships, SMEC ANZ contributed to several philanthropic causes across 2022. Each year, our employees volunteer their time with Habitat for Humanity to support vulnerable families with household maintenance such as cleaning, sanding, and painting. By dedicating our time and skills we are helping create safe and comfortable living environments for those in need, and improving their quality of life. In May, we held a 'Great Book Swap' in each of our 19 ANZ offices – a charity drive where swapping books results in raising funds for remote Indigenous Communities as part of our commitment

to National Reconciliation Week. From reading books to then cycling from the ocean to outback in Western Australia; as a part of the Laverton Cycling Project, riders took on an eight-day bike ride challenge with incredible cultural experiences and desert wilderness sights while fundraising for local and indigenous youth, and community cycling programs within Laverton. Towards the end of the year, SMEC employees across Australia collectively walked over 1,100 kilometres in support of 'Stride for Education', a Community Spirit Foundation initiative, raising awareness and donations to support First Nations young people in reaching their potential through education and lifelong learning.

SMEC ANZ also continued to make a difference within our internal communities through our ongoing commitment to creating an accessible, inclusive, and diverse workplace for all employees. With the ANZ business now having employees identifying from 54 different countries around the world, we launched cultural awareness training, strengthened our relationships with Aboriginal and Torres Strait Islander peoples and businesses through Supply Nation, and continued to create a workplace and culture which acknowledges and fosters inclusion and diversity amongst our community.

## AFRICA

Community development is a pivotal focus within the African CSR Committee. At the Nguirubi Secondary School in Central Kenya, about 360 students and staff now have continuous access to water. The school is located in a semi-arid area which previously suffered from severe water shortages due to an unreliable and expensive metered borehole. Water supply is also affected by the continuous dry seasons. Now that the school can ensure the availability and sustainable management of water, educators are planning to expand facilities to include a new boarding house.

In Ghana, a state-of-the-art, ultrasound machine was donated to the Ga Central Municipal Clinic. The new machine is the first machine in any government-owned facility in the entire municipality and will enhance maternal health delivery for the 50 pregnant women that access the facility monthly while providing a one-stop shop for basic health services. Located in Santa Maria, the Ga Central Municipal Clinic offers health care services to over 300,000 residents in the absence of a dedicated public hospital.

Youth outreach and community development were key priorities for the South African region in 2022, working in partnership with the SA Medical and Education (SAME) Foundation, Jumping Kids, iThemba Lethu and Khulisa Social Solutions. On behalf of the SAME Foundation, funding was used to establish two new fully furnished and networked

Computer Applications Technology centres with a seating capacity for 80 learners. A central toy library will be established by charity partner Khulisa Social Solutions, as the restoration of a designated spacious spare classroom is underway. The toy library will serve up to 150 families monthly and exchange toys with over 40 Early Childhood Development centres in the area.

Together with iThemba Lethu, over 3,540 learners across six schools completed an HIV Prevention Programme which aims to facilitate a five-year behavioural change intervention amongst pre-adolescent children to reduce risk-taking behaviour. There was also a learner development camp and a graduation event for the organisation's Sisters of Destiny initiative.

It was also a pleasure for SMEC South Africa to partner with Jumping Kids, a non-profit organisation that provides prosthetic equipment to children living with lower limb amputation from disadvantaged backgrounds. Through funds provided, Jumping Kids will allocate prosthetic equipment to support two to four children in early 2023 that do not have the means to acquire their own equipment. Allocated funds will also be used towards the maintenance of existing prosthetic equipment and educational bursaries for children within the Jumping Kids programme.



## SOUTH AND CENTRAL ASIA

Sustainability and a focus on our environment were ongoing priorities for our SACA CSR Committee with over 150 trees planted across our Bangalore and Islamabad offices in India and Pakistan. Thank you to our 80+ team members who volunteered their time to participate in making our world greener.

Over in Bangladesh, SMEC partnered with Friendship, a social purpose organisation, to fund a sustainable and economical way of farming for over 1,000 residents and 120 farmers of Bangalia village. A new solar-powered irrigation pump will be installed, with a capacity of 13 horsepower, deriving energy from 16 kilowatts solar panels. With the pump's maximum water lifting capacity of 2,000 litres per minute, water will be supplied to 90-120 bigha farming fields every day.

Also in Bangladesh, a new partnership was established with the Department of Civil Engineering, Bangladesh University of Engineering and Technology as part of SMEC's Industry-Academia collaboration, with three joint research projects proposed for 2023. SMEC will directly collaborate with the top engineering schools to play an impactful role in the engineering community of Bangladesh.

As Sri Lanka experienced an economic downturn, health experts warned of an increased risk of malnutrition. Working alongside the Sri Lankan Government, SMEC Sri Lanka was able to provide immediate food relief to 40 families during the turbulent time. Further, a proposed long-term supportive initiative has been proposed to develop a sustainable program that will focus on community development through sustainable farming and food supply.



## SOUTHEAST ASIA AND PACIFIC

In the Southeast Asia and Pacific region, we are proud to maintain several CSR activities across multiple countries. In partnership with Blue Dragon Children's Foundation, SMEC funded a newly constructed multipurpose room and sanitation facility at a local kindergarten in Vietnam. The multipurpose room is equipped with kitchenware and furniture while the sanitation facility has separate rooms for boys and girls providing 34 children with adequate space and hygiene.

Alongside the ACAY Missions Philippines, SMEC supported the development of the ACAY Skills Hub. Located in the northern part of Metro Manila, the new training centre will help ensure at-risk youth are

getting assistance that will have a lasting positive impact on their lives. Also in the Philippines, nearly 40 SMEC staff and their families volunteered with the Department of Environment and Natural Resources to take part in a tree-planting activity at the 2,659 hectares La Mesa Watershed Reservation. Over 320 seedlings were planted in the protected area, which preserves the only major watershed in Metro Manila.

While in Papua New Guinea, with the PNG Cancer Council, SMEC provided logistical support for two outreach programs to be conducted in six primary schools by health educators. It is expected to benefit as many as 6,000 students, teachers, and community members.

**Connecting  
and uplifting  
communities.**

[smecfoundation.org](https://smecfoundation.org)