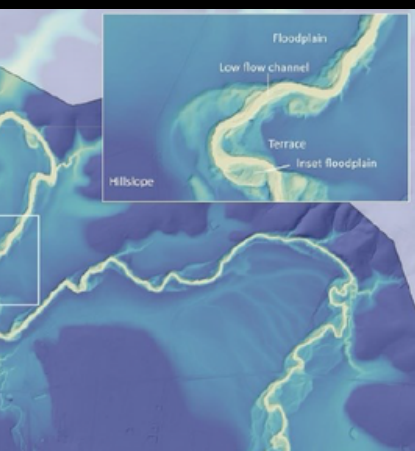


Planning  
Institute  
Australia

**2025  
QUEENSLAND**

**AWARDS FOR  
PLANNING  
EXCELLENCE**



# Contents

Message from the Awards Co-Convenors	04	Strategic Planning Project	29
Message from the State President	05	Improving Planning Processes	32
2025 PIA Queensland Award Sponsors	06	Stakeholder Engagement	34
2025 PIA Queensland Awards Committee	09	Technology & Digital Innovation	36
2025 PIA Queensland Judging Panel	11	Performance & Innovation in Development	37
2025 PIA Queensland Past Award Convenors	12	Great Place	38
Award Winners & Commendations	13	Wendy Chadwick Encouragement	40
Student Secondary Project	14	Wendy Chadwick Emerging Planner Bursary	43
Tertiary Student Project	17	Planning Champion	44
Planning Research	20	Emerging Planner of the Year	46
Community Wellbeing & Diversity	22	Overall Winner	48
Planning with Country	25	2025 PIA Queensland Award Nominations	49
Climate Change & Resilience	27	PIA Queensland Overall Winners 1987 - 2025	52

# Convenor

## Message from the Awards Co-Convenors

2025 marks the 39<sup>th</sup> year of Queensland's Awards for Planning Excellence - the longest running PIA awards program in the country.

The Queensland Awards program leads the way for Australia, and Queensland award recipients continue to be well represented in the National Awards for Planning Excellence.

Queensland is an incredible State, thanks in large part to our history of strong planning, an enduring commitment to ongoing improvement, and a collaborative spirit between private and public sector planners. While other States and Territories are overhauling their planning systems, they're turning to Queensland as the gold standard.

Our profession has faced significant challenges over the past year. Planners in Queensland continue to work within an increasingly complex environment — responding to housing demand, the effects of a changing climate, infrastructure needs, and evolving community expectations. These pressures have tested

our systems, our adaptability, and our capacity to deliver balanced, evidence-based outcomes.

As practitioners, we operate at the intersection of communities, economics, politics, and many allied disciplines. It is in this space that planners add real value — bringing people together, coordinating diverse interests, and shaping practical, forward-looking responses that support Queensland's growth and resilience.

The awards program provides an important opportunity to celebrate projects that do this - showcasing exceptional and innovative projects, and acknowledging the remarkable contributions planners make to improving the places people live, work and play in our beautiful state.

We are again grateful to the loyal support of all our sponsors and supporters especially the Queensland Government's Department of State Development, Infrastructure and Planning who are our Principal Sponsor.

The success of our Awards program is built on the generous contribution of time and energy by members and friends of the Institute, including considerable input by entrants, judges, sponsors and the Awards Committee. We thank you all for your time, enthusiasm and commitment to this worthwhile program. With this strong support, the future of the awards as one of the major public activities of PIA Queensland is assured.

*Matt & Josh*



Matthew Leman MPIA



Josh Walker MPIA

# President

## Message from the State President

For close to four decades the Queensland Awards for Planning Excellence program has showcased the best of planning and raised community awareness of the important work we do as planners. Recognising individuals, teams, and community groups for their innovation, leadership, excellence and commitment to good planning, the Awards celebrate the diversity of work planners do and the different ways it touches the communities we serve. The awards each year serve as an important reminder of the positive impact our work has, and that what we do is worth celebrating as a professional community. Planning matters.

I extend a warm congratulations to all Award for Excellence Winners and Commendation recipients. It is a wonderful achievement and worthy recognition of the hard work and commitment of teams and individuals. I also extend thanks to the many individuals and organisations who took the time to prepare a nomination for this year's awards. We had a strong

field of quality nominations from which to select our Award for Excellence Winners and Commendation recipients.

Each year the awards rely on the generous support of our loyal sponsors. We are again grateful to all our sponsors and supporters, including the Queensland Government who are again our Principal Sponsor.

Thank you also to our awards committee, judges, staff, and sponsors who make the Awards possible each year and have done so again in 2025. Your time, energy, enthusiasm, dedication, and passion are greatly appreciated. I hope you enjoy learning more about the Awards for Excellence winners in this booklet.

I hope also the fantastic projects across the diverse award categories serve as inspiration and reinforce a strong sense of pride in the planning profession.

*Sean*



Sean Cullen RPIA

# Sponsors

## 2025 PIA Queensland Award Sponsors

### Principal Sponsor



Queensland is growing – and planners are helping shape what comes next.

Over the next decade, more than a million new people are expected to call Queensland home. With this growth comes a unique opportunity for planners to shape vibrant, liveable communities across Queensland.

To meet the rising demand for housing, we launched the Securing our Housing Foundations plan. It's a clear roadmap to ensure Queenslanders have access to the homes and communities they need.

One of plan's key initiatives is the \$2 billion [Residential Activation Fund](#), which is unlocking

land for new homes by delivering essential infrastructure like roads, water, and sewerage. Half of this funding is going directly to regional, rural, and remote communities – making sure growth is shared across the state.

We're also making it easier to get homes built faster, including streamlining processes that mean social and affordable housing can be approved in as little as three months – helping Queenslanders move into homes sooner.

In partnership with the Local Government Association of Queensland (LGAQ), we've co-designed a model code for community housing on

land zoned for community facilities. This gives councils the flexibility to tailor housing solutions to suit their local needs.

These efforts support our commitment to deliver 10,000 new homes on land owned by churches and charities, in partnership with the community housing sector – with 500 homes set to be built in the next two years.

We're also working closely with communities and councils to review regional plans and align them with infrastructure priorities – helping protect the lifestyle Queenslanders love.

# Sponsors

## 2025 PIA Queensland Award Sponsors

### Silver & Bursary Sponsor



*Dedicated to a better Brisbane*

We are proud to once again support the PIA Queensland Awards for Planning Excellence.

As one of Australia's fastest-growing cities, we recognise the importance of keeping pace with demand while protecting the lifestyle that makes Brisbane such a great place to live, work and relax.

Good planning creates vibrant lifestyle precincts, strengthens connections across our city and ensures Brisbane adapts to the needs of today and tomorrow.

We're committed to delivering more homes sooner, which is why we are reviewing low to medium density requirements in suburban hubs, allowing more people to live closer to the services they need without sacrificing precious bushland.

Congratulations to tonight's winners and nominees.

Thank you for the important role you play in helping keep Brisbane Australia's lifestyle capital.



**Adrian Schinner**  
Lord Mayor

# Sponsors

## 2025 PIA Queensland Award Sponsors

### Category Sponsors



Part of Energy Queensland



Colin  
Biggers  
& Paisley



Planned  
cover risk  
solutions

### Supporters



JOC CONSULTING  
creative urban planners



DEVELOPMENT SIGNS

### Photo Booth



### After Party

CITY OF  
GOLDCOAST™

# Committee

## 2025 PIA Queensland Awards Committee



Matthew Leman MPIA | Co-Covenor



Josh Walker MPIA | Co-Convenor



Katherine Berlin MPIA



Jaime-Lee Bullivant RPIA



Eleisha Burton RPIA



Paul Burton MPIA



David Corkill MPIA (Fellow)



Kerry Doss RPIA (Fellow)



Peter Egerton MPIA (Fellow)



Kristy Forwood MPIA



Clare Huxley



Rachel Jones MPIA

# Committee

## 2025 PIA Queensland Awards Committee



Matthew Kelly RPIA



Upendo Kowero MPIA



Josh Leddy MPIA



Brett Nancarrow



Warren Rowe MPIA (Fellow)



Trudi Smith MPIA



Amanda Taylor MPIA

# 2025 PIA Queensland Judging Panel

Thank you to our committee and judges for their time  
and expertise in judging the 2025 Awards

Jaco Ackerman MPIA

Shannon Batch RPIA

Aaron Beale MPIA

Vanessa Bennett

Katherine Berlin MPIA

Justin Bougoure

Nicole Boulton RPIA

Andre Brits

Julie Brook RPIA

Chris Buckley MPIA  
(Life Fellow)

Jaime-Lee Bullivant RPIA

Eleisha Burton RPIA

Ben Caldwell

Ciaran Callaghan MPIA

Alyssa Cameron RPIA (Fellow)

Angela Cobcroft RPIA

Justine Cooper

David Corkill MPIA (Fellow)

Michelle Cottrell

Andrew Curthoys RPIA (Fellow)

Kerry Doss RPIA (Fellow)

Michael Ellery RPIA

Brett Esbensen

Evan Fritz MPIA

Laura Gannon MPIA

John Gaskell RPIA (Fellow)

Malcolm Griffin RPIA (Fellow)

Shannon Haines MPIA (Fellow)

Medina Handley MPIA (Fellow)

David Hansen RPIA (Fellow)

Sharon Harwood RPIA (Fellow)

Phil Heywood MPIA  
(Life Fellow)

Leo Jensen RPIA (Fellow)

David King MPIA (Fellow)

David Kretchmann RPIA

Kobi Lane MPIA

Karley Lawler

Josh Leddy MPIA

Mark Limb MPIA

Meg Luton MPIA

Rebekah McDonald MPIA

Mary Mealey MPIA (Life Fellow)

Karen Meiklejohn

Marisa Menin MPIA

Leo Mewing MPIA

Julia Miller-Randle MPIA

Hayley O'Brien MPIA

John O'Dwyer RPIA

Tim O'Leary MPIA

Martin Reason

Nathan Rule MPIA

Kirsten Sellers RPIA

Farnoosh Shokoofan PIA (Assoc.)

Greg Tupicoff MPIA (Fellow)

Liza Walks MPIA (Fellow)

Dirk Van Der Kamp MPIA

Sandy Vigar RPIA (Life Fellow)

Stephanie Wyeth MPIA (Fellow)

# Judging

## 2025 PIA Queensland Past Awards Convenors

We extend our sincere thanks to all our Awards Convenors for their dedication and contribution to the success of the program over the years.

1987-1988	Phil Heywood MPIA (Life Fellow)
1989	Gary White MPIA (Life Fellow)
1990-2001	Tom Haupt
2002	Kylie Craig
2003-2004	Leo Jensen RPIA (Fellow)
2005	Kylie Craig
2006	Phil Heywood MPIA (Life Fellow)
2007-2009	Alyssa Cameron RPIA (Fellow)
2010	Kristy Forwood MPIA
2011	Kristy Forwood MPIA & Alyssa Cameron RPIA (Fellow)
2012-2013	Kate Isles MPIA
2014-2019	Medina Handley MPIA (Fellow)
2020-2021	Medina Handley MPIA (Fellow) & Josh Walker MPIA
2022-2023	Josh Walker MPIA & Matthew Leman MPIA
2024	Josh Walker MPIA
2025	Josh Walker MPIA & Matthew Leman MPIA



2025  
QUEENSLAND

AWARDS FOR  
PLANNING  
EXCELLENCE

# Award Winners and Commendations

# Category

## Secondary Student Project

Sponsored by



### AWARD

**Morgan Oiso and Anlin Tso - St. Laurence's College**

### PROJECT

**Pinkenba State School Redevelopment Concept Plan**



The Pinkenba State School Redevelopment Project reimagines a decommissioned heritage-listed school site in Brisbane as a multifunctional hub serving the local community. The project includes a comprehensive and detailed analysis of the site, exploring its significance to local Indigenous groups and its more recent history, as well as its physical characteristics such as soil types and flood vulnerability. The authors also reviewed relevant State and local planning policies and gathered the views of local residents through a door-to-door survey and by attending a meeting with the Community Association.

This is an extremely thorough and well-presented analysis and set of recommendations that draws on an impressive range of data and analytical techniques. The judges were especially impressed with the project's success in balancing planning policy objectives, community aspirations and plausible but imaginative proposals for the future of the site.

Congratulations Morgan and Anlin, and their teachers for supporting such an excellent project.



*Land of the Traditional Owners: Land of the Yugarabul People in the Yagara Nation.*

# Category

## Secondary Student Project

Sponsored by



### COMMENDATION

**Jinwoo Bang - Wavell State High School**

### PROJECT

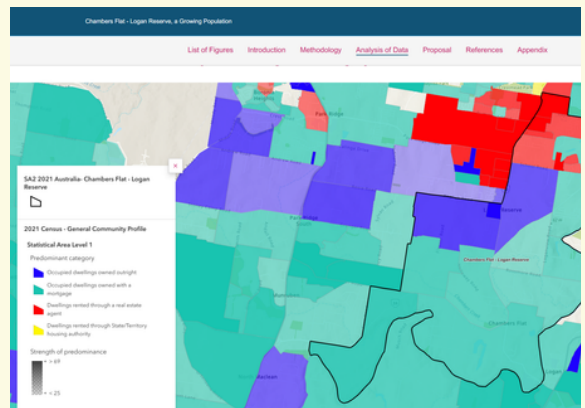
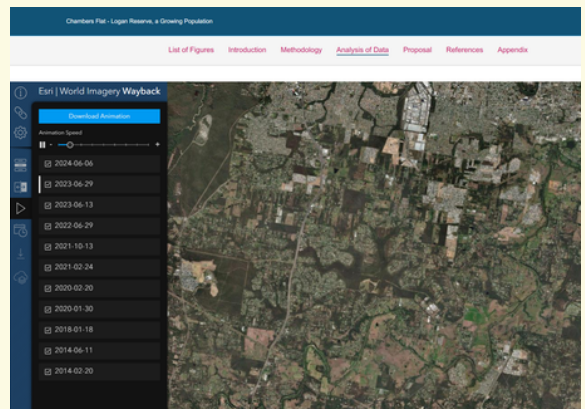
**Chambers Flat - Logan Reserve, a Growing Population**



Jinwoo Bang's project demonstrated an excellent combination of rigorous quantitative analysis with thoughtful data from interviews with key stakeholders in local and state government. Although it focussed on population change in Chambers Flat, this approach has the potential to be applied to other high growth areas in peri-urban South East Queensland and provides a solid foundation for future planning and growth management. The judges were also impressed with the use of StoryMaps in ArcGIS to support the impressive research and findings.

Congratulations Jinwoo.

**Judges Note:**  
In both of these Commended projects, we would also like to acknowledge the continuing support for high quality spatial scientific student projects provided by Wavell State High School.



*Land of the Traditional Owners: Land of the Yugambeh people, who are part of the broader Yugara, Turrbal, Yugarabul, and Jagera language groups.*

# Category

## Secondary Student Project

Sponsored by

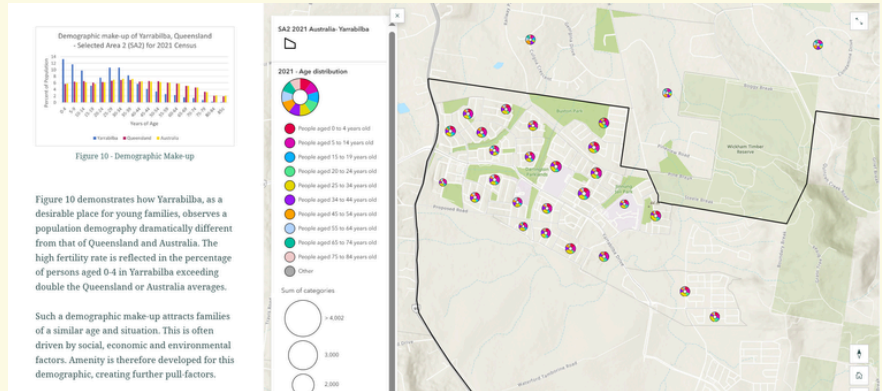


### COMMENDATION

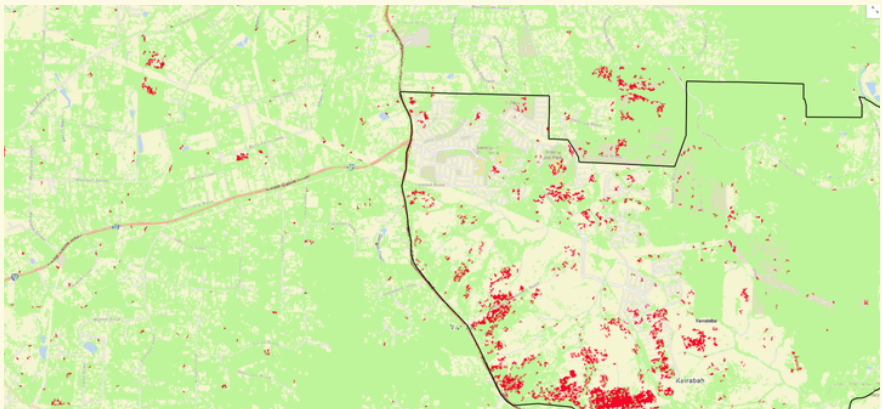
**Grace Langton - Wavell State High School**

### PROJECT

**Yarrabilba - Planning for Population Change and Challenges**

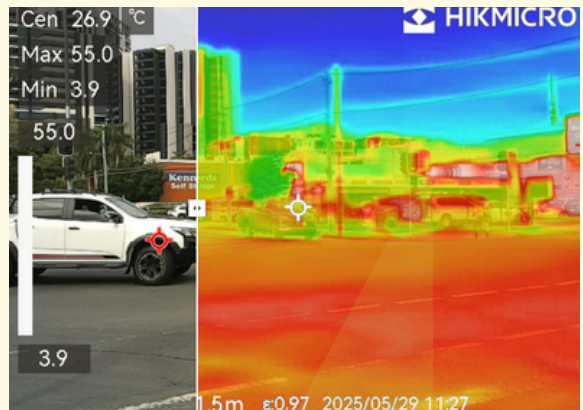


Yarrabilba – Planning for Population Change and Challenges’ use of ArcGIS to interrogate a variety of data sources produced an excellent demographic profile of the fast-growing master planned community in Logan. Grace demonstrated a high degree of rigour in assembling, analysing and presenting data, highlighting the planning challenges to provide services for young families in a car-dependent environment. The project’s use of StoryMaps to present future possibilities and Wayback Imagery to show historical trends exemplifies the skills needed by successful planners in the future.



**Judges Note:**  
In both of these Commended projects, we would also like to acknowledge the continuing support for high quality spatial scientific student projects provided by Wavell State High School.

Congratulations Grace.



*Land of the Traditional Owners: Land of the Wanggeriburra clan of the Yugambeh language group.*

# Category

## Tertiary Student Project

Sponsored by



### AWARD

Teah Hammet - Queensland University of Technology

### PROJECT

Accounting for Compound Risk in Resilient Regional Planning for South East Queensland



Accounting for Compound Risk in Resilient Regional Planning for South East Queensland makes a timely contribution to contemporary planning practice. Drawing on detailed research and analysis of climatic and non-climatic risk drivers, it shows how the growing challenge of multiple, overlapping natural hazards can be addressed through land-use policy. The study sets out a clear and practical path for integrating policy and technical assessment to build stronger, more resilient regional outcomes.

By aligning with the United Nations' Sendai Framework and highlighting the importance of collaboration between

governments, planners and communities, this work offers guidance that can be applied beyond South East Queensland. It is an impressive example of evidence-based planning and a valuable model for embedding climate resilience into regional and urban planning across Australia.

Congratulations Teah.



Land of the Traditional Owners: Land of the Turrbal and Yuggera Country in Meanjin.

# Tertiary Student Project

Sponsored by



## COMMENDATION

Sophia Dow -  
The University of  
Queensland

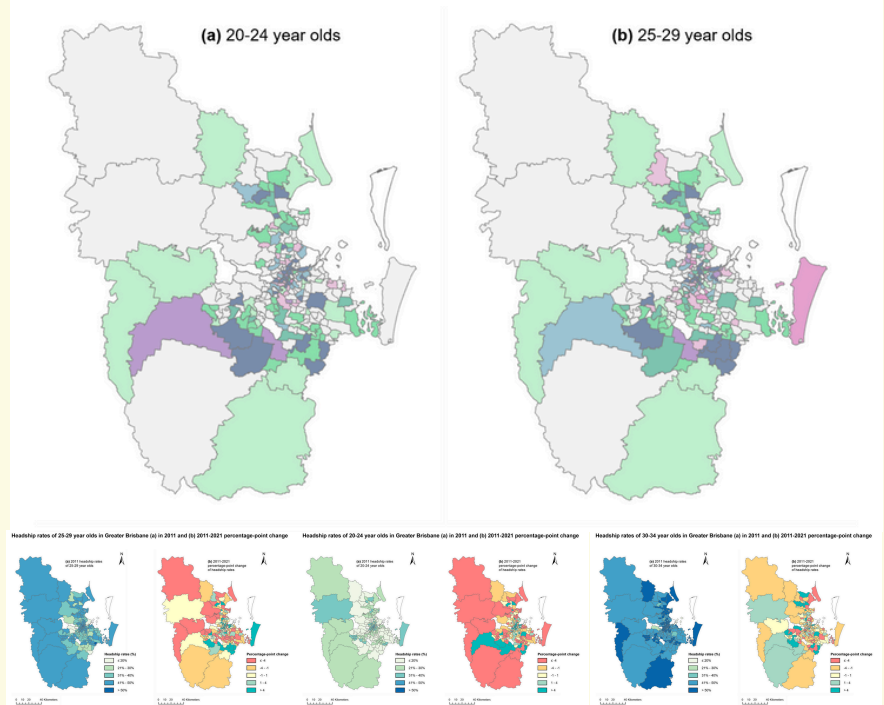
## PROJECT

**A metropolitan  
geography of young  
heads of households:  
the case of Greater  
Brisbane**

This research project delivers a detailed account of young adult housing geographies in a major city. The innovative research challenges prevailing narratives, introduces international concepts to the Australian context and provides vital insights to guide housing and planning reform.

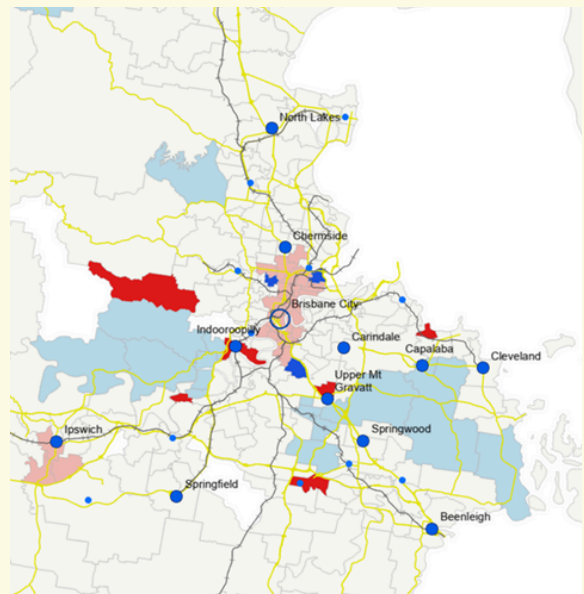
By exploring the complex demographic, socioeconomic and spatial challenges facing young Australians in the housing market, the research highlights the critical influence of planning and housing policy in shaping these outcomes. Importantly, it introduces global concepts such as

## Change in headship rates of young adults and dwelling stock growth from 2011 to 2021 across Greater Brisbane



“youthification” and “studentification” into the Australian discourse, demonstrating the vital role young adults play in urban change and the vitality of metropolitan areas.

Congratulations Sophia.





# Category

## Planning Research

Sponsored by



### AWARD

**Joanne Dolley, Keiran Hardy, Tony Matthews - Griffith University**

### PROJECT

**Public Space and the Sustainable Development Goals - Inclusion, Safety, Culture and Nature**

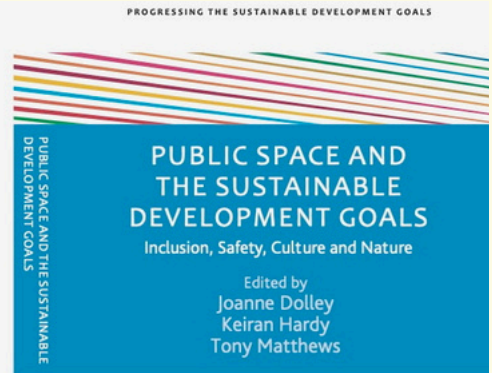
#### PUBLIC SPACE AND THE SUSTAINABLE DEVELOPMENT GOALS

As the world strives to meet the Sustainable Development Goals (SDGs) by 2030, this book deftly examines the capacity and potential of public space design to tackle key issues related to climate change, violence, safety, law, cultural and gender inclusivity as well as creative and community engagement.

Presenting empirical and theoretical insights from urban planners, criminologists, disability advocates, geographers and artists, *Public Space and the Sustainable Development Goals* highlights the increased demand for high-quality public open spaces for diverse populations. It answers the pivotal question of how to transform public spaces into safe, vibrant, and inclusive places that are resilient to contemporary social and environmental pressures. Expert contributors explore solutions for improving public space planning, design and policy with a focus on UN SDG 11, Target 7.

This timely book is an essential guide for scholars of geography, urban design, sociology and criminology. It is also a useful informative resource for practitioners of urban planning and landscape architecture.

Joanne Dolley is in the Cities Research Institute, Keiran Hardy is in the Griffith Criminology Institute and Tony Matthews is in the School of Engineering and Built Environment and the Cities Research Institute at Griffith University, Australia.



Public Space and the Sustainable Development Goals: Inclusion, Safety, Culture and Nature by Joanne Dolley, Keiran Hardy and Tony Matthews of Griffith University is a groundbreaking book that rethinks how public spaces can be regenerated to be more inclusive, safe, resilient and sustainable.



The judges agreed that the strength of this work lies in its global perspective and scholarly rigour, underpinned by contributions from a diverse network of international thought leaders and extensive peer review. The judges highlighted its accessible, adaptable and highly implementable strategies across diverse social, cultural and environmental contexts.

Strategically, the book aligns with global and national planning priorities and responds to challenges such as health inequalities, social isolation, urban resilience and rapid urbanisation. Its relevance to Queensland planning is highlighted by its ability to inform contemporary practice and long-term opportunities such as the Brisbane 2032 Olympics.

Congratulations Joanne, Keiran and Tony.



# Category

## Planning Research

Sponsored by



### COMMENDATION

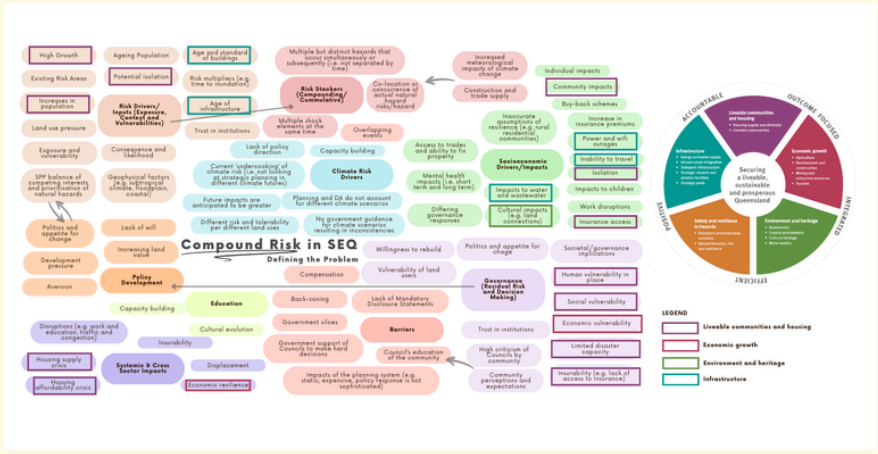
**Teah Hammet - Queensland University of Technology**

### PROJECT

**Accounting for Compound Risk in Resilient Regional Planning for South East Queensland**



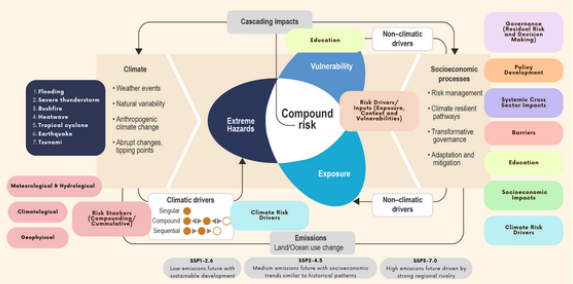
Teah's research explores the important concept of compound risk in land use and regional planning. The research highlights how exposure and vulnerability are amplified by population growth, urbanisation and climate change and identifies the lack of recognition of compound risk in Queensland's current State Planning Policy.



The judges praised the originality and innovation of this research, noting its commendable contribution to disaster resilience and its potential to extend the application of the Sendai Framework in the Queensland context. While at an early stage, the work was commended for its

clarity in articulating the gap in current planning practice and for proposing policy reforms that could strengthen resilience across local and regional systems.

Congratulations Teah.



*Land of the Traditional Owners: Land of the Turrbal and Yuggera Country in Meanjin.*

# Category

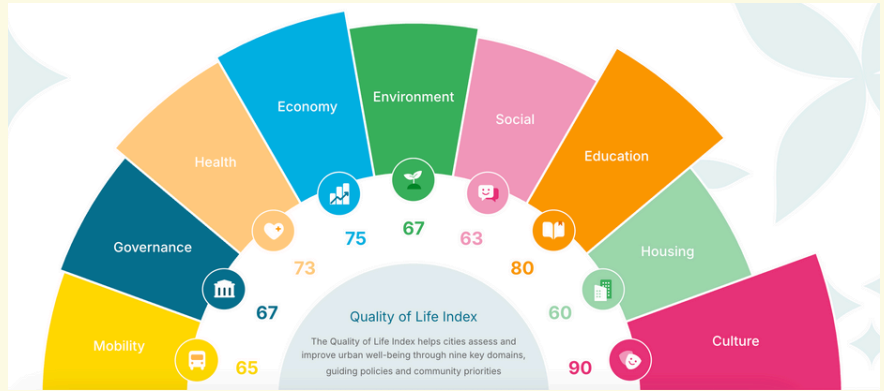
## Community Wellbeing & Diversity

### AWARD

City of Logan

### PROJECT

UN-Habitat Quality of Life Pioneer City Initiative - City of Logan



The City of Logan's UN-Habitat Quality of Life Pioneer City Initiative is an internationally recognised model of socially sustainable planning, placing community wellbeing at the forefront of urban development. As one of only ten global pioneer cities selected by UN-Habitat, Logan co-designed a dual-layer Quality of Life Index combining global benchmarks with locally defined priorities, ensuring planning reflects best practice while responding to the health, safety, and cultural diversity of the community.

Using advanced tools such as mobility data, satellite imagery, Spendmapp, and AI-enhanced dashboards, the city developed a comprehensive evidence base across nine wellbeing domains,

identifying strengths and challenges that enabled targeted, people-focused interventions.

Collaboration was central to the initiative, with UN-Habitat, Geografia Pty Ltd, global experts, and local stakeholders contributing through workshops and engagement platforms to ensure transparent decision-making and policies that genuinely reflect community aspirations. Strategically embedded in the Transform Logan Strategy and aligned with the United Nations Sustainable Development Goals, the project positions Logan as a leader in social sustainability.

Congratulations City of Logan.



# Category

## Community Wellbeing & Diversity

### COMMENDATION

Sunshine Coast Council

### PROJECT

Sunshine Coast Council  
Marcoola Affordable  
Housing Project



The Marcoola Affordable Housing Project by Sunshine Coast Council is an outstanding example of socially responsible and innovative local government leadership. Supported by the Queensland Government's \$2 billion Housing Investment Fund, the project has delivered 22 high-quality modular homes across 11 Council-owned sites, directly addressing housing affordability challenges for low-income key workers. By leveraging underutilised public land and adopting modular construction, Council has demonstrated how timely, cost-effective, and sustainable housing can be delivered with minimal disruption to the community.

More than a housing initiative, the project strengthens community resilience by ensuring essential workers have secure, affordable, and well-designed homes integrated seamlessly into existing neighbourhoods. Its use of dual-dwelling configurations, income-based rent models, and collaborative governance sets a powerful precedent for other councils. The project embodies planning for people—enhancing social inclusion, supporting local economic capacity, and demonstrating how councils can lead transformative solutions to Australia's housing crisis.

Congratulations  
Sunshine Coast Council.



*Land of the Traditional Owners: Land of the Kabi Kabi Peoples and the Jinibara peoples.*

# Category

## Community Wellbeing & Diversity

### COMMENDATION

**Logan City Council  
Queensland  
Government, Australian  
Government and Rekon  
Youth Org.**

### PROJECT

**Wilbur Street Youth  
Centre**



The Wilbur Street Youth Centre is an exemplary initiative that showcases how planning can directly improve the health, wellbeing and resilience of young people. Delivered through collaboration between Logan City Council, the Queensland and Australian Governments, and Rekon Youth Org, the project transformed an underutilised site in an established commercial centre into a vibrant, inclusive hub for youth development and community connection.

The centre provides safe spaces for recreation, learning and cultural expression, with facilities ranging from sporting and creative activity areas to mentoring and training programs.



Importantly, the design and programming were shaped through strong engagement with local young people, ensuring the centre reflects their aspirations, needs, and identity.

Congratulations Logan City Council, Queensland Government, Australian Government and Rekon Youth Org.



*Land of the Traditional Owners: Logan City Council respectfully acknowledges the Traditional Custodians of the lands across the City of Logan.*

# Category

## Planning with Country

### COMMENDATION

Sunshine Coast Council

### PROJECT

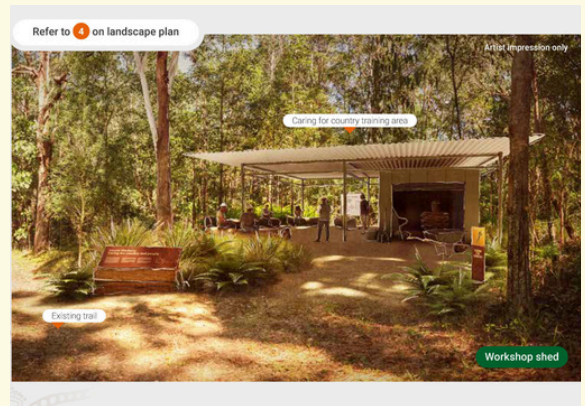
**Mount Ninderry Environment Reserve Landscape Plan: A co-design journey with the Kabi Kabi Peoples**

The Mount Ninderry Environment Reserve Landscape Plan applies genuine and innovative co-design methods that have fostered strong partnerships and enabled meaningful, ongoing stewardship by the Kabi Kabi people of an iconic Sunshine Coast landmark and protected area. Through this collaborative approach, the project delivered culturally responsive outcomes while also securing broad stakeholder acceptance and ownership of the Plan. It demonstrates a clear commitment to embedding respect, trust, and cultural integrity into planning practice, providing a robust foundation to guide and inform future Council initiatives. By



integrating traditional knowledge with contemporary planning processes, the project sets a valuable example for culturally informed environmental management and community engagement processes.

Congratulations to Sunshine Coast Council.



*Land of the Traditional Owners: Land of the Kabi Kabi Peoples.*

# Category

## Planning with Country

### COMMENDATION

**Wujal Wujal Aboriginal Shire Council, Meridian Urban and Water Technology**

### PROJECT

**Wujal Wujal Master Plan Review Project**



The Wujal Wujal Master Plan Review Project is a strong and high quality example of innovative community collaboration, bringing together scientific approaches and cultural knowledge. The process engaged all parts of the community in meaningful and respectful ways, resulting in recommendations that were culturally, environmentally, and socially responsive for the Wujal Wujal community.

Importantly, through the application of a listening brief, the project also created opportunities for healing from trauma experienced during the devastation of Cyclone Jasper.



The project has established a valuable, transferable model to guide similar initiatives in hazard-prone communities.

Congratulations to Wujal Wujal Aboriginal Shire Council, Meridian Urban and Water Technology.



*Land of the Traditional Owners: Eastern Kuku Yalanji Country.*

# Category

## Climate Change & Resilience

Sponsored by



### AWARD

**Wujal Wujal Aboriginal Shire Council, Meridian Urban and Water Technology**

### PROJECT

**Wujal Wujal Master Plan Review Project**

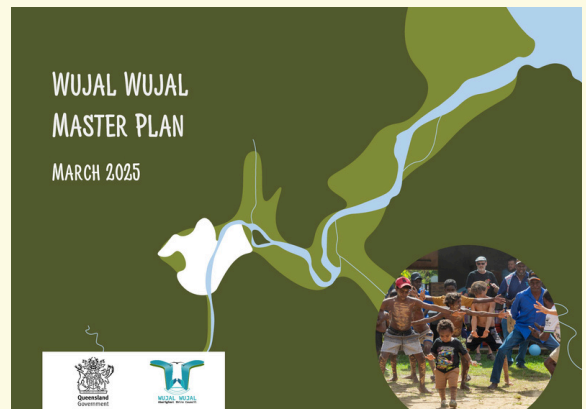


Wujal Wujal Aboriginal Shire Council, in partnership with Meridian Urban and Water Technology, received very high praise from the judges for its visionary and culturally grounded Master Plan Review, developed in response to the devastation of Cyclone Jasper.

This exemplary initiative integrates technical excellence with deep cultural knowledge, empowering the Wujal Wujal community to rebuild safely and sustainably on Country. The plan's use of the Queensland Resilience, Adaptation Pathways and Transformation Approach, and its pioneering Land Suitability Model sets new benchmarks in disaster risk reduction and long-term resilience.

Guided by genuine collaboration with Traditional Owners, Elders and local residents, the Master Plan delivers a flood-responsive spatial framework and a clear, actionable roadmap for recovery. It provides a thorough assessment of multiple hazard risks and long-term impacts, supported by a comprehensive engagement strategy that actively incorporates community feedback and cultural wisdom.

Congratulations to Wujal Wujal Aboriginal Shire Council, Meridian Urban and Water Technology.



*Land of the Traditional Owners: Eastern Kuku Yalanji Country.*

# Category

## Climate Change & Resilience

Sponsored by



### COMMENDATION

**Kalfresh Pty Ltd and Epic Environmental Pty Ltd - A Montrose Environmental Company**

### PROJECT

**Scenic Rim Agricultural Industrial Precinct (SRAIP) Project - Pioneering Circular Economy Solutions for Climate-Resilient Agriculture**

Kalfresh Pty Ltd in partnership with Epic Environmental Pty Ltd, is highly commended for its pioneering Scenic Rim Agricultural and Industrial Precinct (SRAIP)—Australia's first integrated bioenergy and food precinct. This visionary initiative embeds circular economy principles at the heart of agricultural and industrial planning, anchored by a cutting-edge anaerobic digestion facility that transforms food and farm waste into renewable energy.

SRAIP sets a precedent for climate resilience, demonstrating how the agricultural industry and planning approaches can evolve together to



reduce greenhouse gas emissions and strengthen rural communities to meet the challenges of climate change. By integrating bioenergy systems within a food production hub, the project delivers climate solutions through both mitigation and adaptation, while offering a replicable model for sustainable development.

Congratulations to Kalfresh Pty Ltd and Epic Environmental Pty Ltd – A Montrose Environmental Company.



*Land of the Traditional Owners: Land of the Yuggera Ugarapul People.*

# Category

## Strategic Planning Project

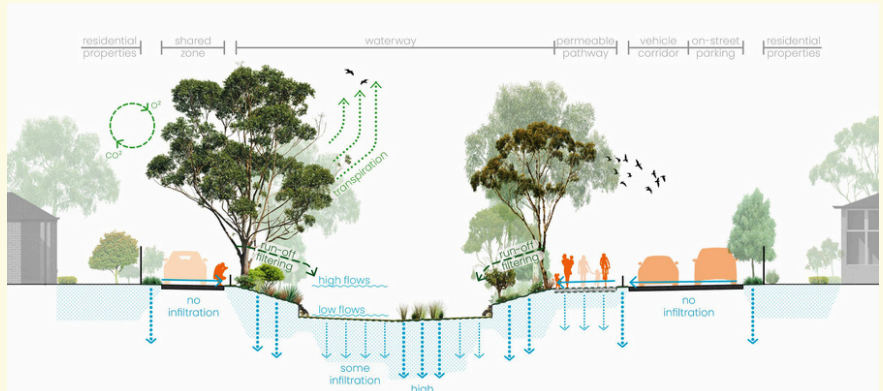
Sponsored by  
**Colin Biggers & Paisley**

### AWARD

**Tract Consultants and Bundaberg Regional Council**

### PROJECT

**Washpool Creek Master Plan**



The Washpool Creek Master Plan demonstrates an ambitious strategic vision to transform part of the city's drainage system by proactively planning for a healthy waterway that enhances social and environmental outcomes, reduces flood risk, and strengthens sustainability and resilience.

The master plan transforms perception and cultural misunderstanding of how a waterway corridor can function in modern communities, anchoring the creek as a central community asset.

Guided by the voices of community, stakeholders and Traditional Custodians, the judges noted that the master plan fosters a generational shift in public perception for how waterway corridors

can be valued as vibrant, multifunctional spaces, incorporating environmental and cultural benefits rather than "just a drain".

The Master Plan is a catalyst for change. It promotes progressive, landscape-led approaches to stormwater management and enhances community wellbeing through connection, resilience, and health. By strengthening both the ecological and social fabric of the Washpool Creek catchment, the project sets a new benchmark for strategic planning—not just in regional Queensland, but across urban environments nationwide.

Congratulations Tract Consultants and Bundaberg Regional Council.



*Land of the Traditional Owners: Land of Taribelang Bunda, Gooreng Gooreng, Gurang, and Bailai peoples.*

# Category

## Strategic Planning Project

Sponsored by  
**Colin Biggers & Paisley**

### COMMENDATION

**Noosa Council with Archipelago and CRED Consulting**

### PROJECT

**Pomona Place Plan Pilot**



Noosa Council embarked on a new way of engaging, planning and improving its towns and villages through the Noosa Place Program. The judges were impressed with the place-based approach that has realised an underlying objective of listening to the people who live, work and play in each location to create a shared vision and collaborative action plan. The project tested new engagement methods, while building a genuine, community-led plan for the town that looked to build on existing strengths, harness community knowledge and creativity, and co-design a long-term vision.

The judges were genuinely amazed that from a population of just over 2,000 residents more than 1,000 contributions were

received across a range of activities, demonstrating strong buy-in. Feedback consistently confirmed that the Plan reflects local priorities and that people felt genuinely listened to.

The implementation framework, which emphasised delivering quick wins and clearly assigning responsibilities, is highly commendable. The judges also highlighted the project's success in testing and strengthening Council's internal structures to achieve a truly cross-organisational plan.

Congratulations Noosa Council, Archipelago and CRED Consulting.



*Land of the Traditional Owners: Land and water of the Kabi Kabi people.*

# Category

## Strategic Planning Project

Sponsored by  
**Colin Biggers & Paisley**

### COMMENDATION

**Cairns Reginal Council, SMEC and Pilot Places**

### PROJECT

**Cairns City Precincts**



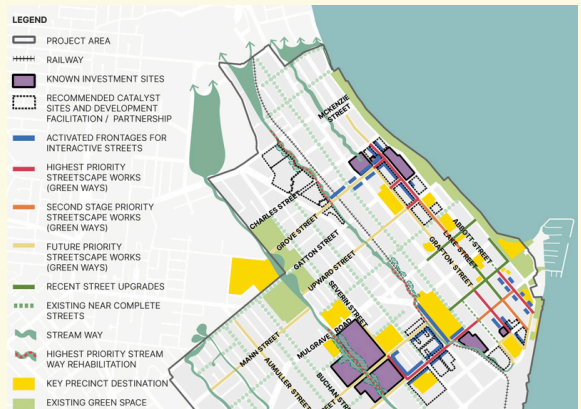
The Cairns City Precincts Urban Regeneration Project (City Precincts) is an ambitious, design-led initiative responding to the city's rapid growth and evolving challenges.

The judges commend the clear, place-based approach to the strategy and the development of practical tools to support urban change and balance the city's established greenfield pipeline with a stronger focus on deliverable infill.

Centred on Connectivity, Housing and Climate Resilience, the framework is underpinned by community engagement, spatial analysis and integrated economic, climate and planning assessments. It focuses action in three distinct, interconnected precincts [Health, Major Events

and CBD South] chosen for their potential to support housing diversity, jobs and civic life. The judges strongly endorse the approach that includes “cool green” walking and cycling links, climate appropriate housing typologies suited to the local market, and streets and public spaces designed for shade, comfort and safety.

Congratulations Cairns Reginal Council, SMEC and Pilot Places.



*Land of the Traditional Owners: Land of the Djabugay, Yirrganydji; Buluwai, Gimuy Walubara Yidinji; Mandingalbay Yidinji; Gunggandji; Dulabed and Malanbara Yidinji; Bundabarra and Wadjanbarra Yidinji; Wanyurr Majay; Mamu and NgadjonJii peoples.*

# Category

## Improving Planning Processes

### AWARD

**Gold Coast Waterways Authority and Meridian Urban**

### PROJECT

**A new statutory planning framework for sustainable access and management of Gold Coast waterways**



The Gold Coast Waterways project is a pioneering approach to managing one of Australia's most complex and dynamic coastal environments. The initiative has delivered a new statutory planning framework that integrates mapping, policy, and development assessment into a cohesive and accessible system for tidal works and waterway management.

Demonstrating originality and innovation, the project reframes the waterways as a managed infrastructure network, introducing a visionary code and mapping tool that supports sustainable access and development. The framework aligns with multiple overlapping jurisdictions and regulatory instruments,

showcasing strategic depth and a commitment to public interest outcomes.

Implementation has been user-focused, with tools tailored to industry stakeholders such as pontoon companies and consultants and the methodology offers clear transferability to other coastal and waterway contexts. The project's success is underpinned by extensive collaboration across state agencies, local government, and the community, culminating in a robust and practical planning solution.

Congratulations Gold Coast Waterways Authority and Meridian Urban.



*Land of the Traditional Owners: Land and water of the Yugambah peoples of SEQ, including the Kombumerri, Mununjali, Wangerriburra, Bullongin and other clans.*

# Category

## Improving Planning Processes

### COMMENDATION

Logan City Council

### PROJECT

Logan Centres Implementation Program



The Logan Place Plan is commended for its exemplary integration of place-making principles into the city's planning framework, driving economic transformation through coordinated urban design, public space activation and strategic investment.

This initiative demonstrates a thoughtful blend of non-statutory planning policies, aligning infrastructure planning with community-scale placemaking. Its originality lies in the multi-scalar approach—from tactical interventions to city-wide strategies—delivered through a robust framework that has been successfully implemented over several years.

The project reflects high-quality outcomes supported by strong internal alignment across Council departments and a substantial financial commitment. While its strategic alignment is primarily local, the model showcases how planning can be used to elevate urban environments and community identity.

Congratulations Logan City Council.



*Land of the Traditional Owners: Land of the Yuggera and Yugambah speaking people, as key Traditional Custodians of Logan City.*

# Category

## Stakeholder Engagement

Sponsored by



### AWARD

Noosa Council with Archipelago and CRED Consulting

### PROJECT

Pomona Place Plan Pilot



As a pilot for Noosa Council's Place Program, the Pomona Plan was co-created with the community through deep listening, cultural grounding, and creative participation.

Across three phases of engagement, more than 1,000 contributions were received from residents, business owners, community groups, Traditional Owners and visitors. This inclusive process identified what makes Pomona special, explored opportunities for improvement, and refined a long term vision with strong community ownership. The result is a shared framework of actions focussed on enhancing public spaces, cultural events environmental initiatives and ongoing collaboration.

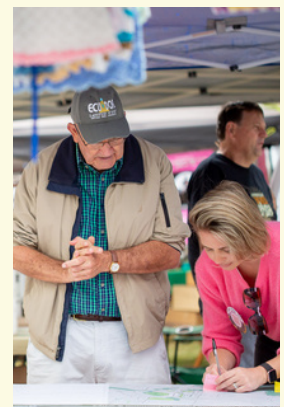
First Nations values were central to the Plan's development with a Walk on Country with Kabi Kabi Traditional Owners providing cultural insight and shaping actions to care for and celebrate Country. Their Commitment and Statement are featured in the Plan's foreword, reinforcing shared responsibility for future generations. Creative engagement reflected Pomona's identity. Bespoke branding, "Love Letters to Pomona", sketching workshops and walkshops, encouraged authentic participation, celebrated local creativity and generated valuable insights. The early delivery of "quick wins" further built trust and demonstrated responsiveness.



The Pomona Place Plan stands as a living framework - celebrating local identity, embedding First Nations knowledge and providing a transferable model of innovative, community led engagement for the future.

Congratulations Noosa Council, Archipelago and CRED Consulting.

*Land of the Traditional Owners: Land and water of the Kabi Kabi people.*



# Category

## Stakeholder Engagement

Sponsored by



### COMMENDATION

Fourfold Studio

### PROJECT

**Dalby Cultural Centre and Thomas Jack Park Precinct Stakeholder and Community Engagement**



The Dalby Cultural Centre and Thomas Jack Park Precinct project began with a bold vision: to create a cultural and social anchor for Dalby—a new library, cinema, art gallery, and visitor information centre that would help revitalise the town and strengthen its identity. Yet by early 2024, the project faced a crisis. Misinformation and fear, spread by a vocal campaign group, had divided the community, eroded trust in Council, and placed this significant opportunity at risk.

Community engagement for the project sought to turn division into collaboration. It was based on listening, building trust, and bringing the full community into the conversation. The project team embedded themselves in Dalby with

more than 80 in-person touchpoints, including workshops, youth forums and targeted engagement with older residents most influenced by misinformation. Transparency, inclusion, and compassion underpinned the approach, alongside regular councillor briefings that translated community voices into clear, actionable insights.

Public sentiment is often difficult to turn and the judges were particularly impressed with how this project built trust and targeted different sectors of the community to shift in sentiment on the project. Community members who began as sceptics became advocates, youth voices shaped a co-designed vision, and residents directly influenced the design.



The process culminated in unanimous Council approval in late 2024, supported by an enthusiastic community.

Congratulations Fourfold Studio.



*Land of the Traditional Owners: Land of the Barunggam people, with Traditional Owners also representing Cobble Cobble and Wakka Wakka Nations.*



# Category

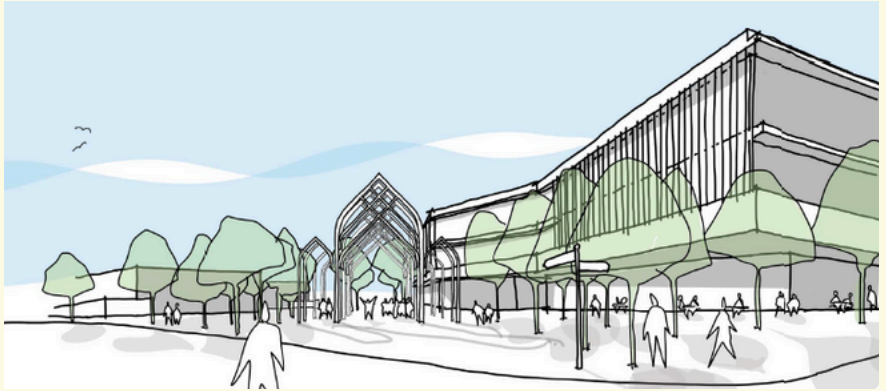
## Performance & Innovation in Development

### AWARD

Mewing Planning Consultants, in partnership with Fiteni, ASPECT Studios, Arkhefield, Urban Enquiry and Fourfold Studio

### PROJECT

Botanix Master Plan



The Botanix Master Plan project is recognised as an outstanding achievement in Performance and Innovation in Development through guiding the future transformation of a suburban infill site in Redlands. This initiative project demonstrated a performance-based approach to gain approval for detached homes, mid-scale apartments, terrace housing and commercial uses within an established low-density residential community. The project strategically repurposes a disused nursery site, making use of existing features to foster innovation, promote sustainability, and enable adaptive reuse, including the thoughtful integration of elements from the original structure into the

public domain to enrich the site's character and community connection.

The project recognises a unique opportunity to catalyse future renewal, through introducing a mix of uses, increased density and showcasing contemporary housing typologies. The project also reflects a forward-thinking approach to public consultation and collaboration, balancing the demand for more housing and increased density with responsiveness to community needs. By integrating 11,000m<sup>2</sup> of publicly accessible open space and additional housing choice, the project also offers an innovative development model with a significant community benefit.



Congratulations to Mewing Planning Consultants, Fiteni, ASPECT Studios, Arkhefield, Urban Enquiry and Fourfold Studio.



*Land of the Traditional Owners: Land of the Quandamooka People.*

# Category

## Great Place

Sponsored by



### AWARD

**Brisbane Sustainability Agency**

### PROJECT

**Archerfield Wetlands Parkland**



The Archerfield Wetlands Parkland project stands out as an exemplar regional shaping and multi-faceted Great Place for Brisbane and the broader region. The project represents transition and renewal from industrial, contaminated and underutilised land to a resilient, biodiverse and community focused project.

The project establishes strong collaboration and support with multiple stakeholders including Traditional Owners, local environmental groups, active transport users, Brisbane City Council (as asset owner and manager) and local residents and achieves

multiple strategic objectives related to climate change and resilience, active and healthy communities, genuine reflection of Traditional Owner interests, stronger communities bonds and protection of environmental assets.

The judges applaud the Brisbane Sustainability Agency and its partners for an outstanding project, which ensures viability, secures stakeholder buy-in and provides a transferable model for other local governments to implement.

Congratulations Brisbane Sustainability Agency.



*Land of the Traditional Owners: Land of the Yuggera Ugarapul People.*

# Category

## Great Place

Sponsored by



### COMMENDATION

Department of Housing and Public Works with Baber Studio

### PROJECT

Social Housing Project at Inala



The Social Housing Project at Inala has been thoughtfully designed to prioritise community connection, environmental sustainability, and liveability. Situated within a suburb traditionally associated with social housing, the project exemplifies a new wave of housing that is not only functional but also enriches the community through vibrant and accessible architecture.

The judges were particularly impressed with the considered architecture and urban design, as well as the project's strong integration with the surrounding neighbourhood and preservation of green space. The landscaping elements provide visual relief while encouraging social interaction, supporting both wellbeing and community



cohesion. Beyond addressing the universal need for additional housing, the project delivers high-quality, well-located built form with biophilic design principles.

Congratulations to the Department of Housing and Public Works and Baber Studio.



*Land of the Traditional Owners: Land of Yuggera country.*

# Wendy Chadwick Encouragement

Sponsored by



Dedicated to a better Brisbane

## AWARD

City of Moreton Bay and CRED Consulting

## PROJECT

City of Moreton Bay Changing Places Network Plan



The Changing Places Network Plan is ground-breaking.

It conveys excellent well-considered policy founded on genuine evidence and delivers comprehensive proposals to improve the urban environment for a vulnerable group in the community.

It is truly innovative - this innovation distinguishes the Plan from the other high-quality nominations. It demonstrates not only the benefit of meaningful and respectful engagement, but also how a plan like this can facilitate long term economic and social benefits for the Moreton Bay region.

It is an exemplar for communities across Australia.



Congratulations City of Moreton Bay and CRED Consulting.



Land of the Traditional Owners: Land of the Jinibara, Kabi Kabi, and Turrbal peoples.

# Wendy Chadwick Encouragement

Sponsored by



Dedicated to a better Brisbane

## COMMENDATION

**Doomadgee Aboriginal Shire Council, Meridian Urban and Circ Design**

## PROJECT

**Doomadgee Futures Planning Prospectus**



The Doomadgee Futures Planning Prospectus exemplifies excellence in community-led planning through the innovative involvement of local people in identifying objectives. The methodology, progressing thoughtfully from visions and goals through activities to concrete proposals, demonstrates a high level of rigour and strategic thinking.



The engagement techniques applied are exemplary, ensuring meaningful participation across all sectors of the community. The Doomadgee community—one of Queensland's most remote—should be commended for its dedication to authentic, locally-driven planning and for setting a benchmark in collaborative, place-based approaches.

Congratulations  
Doomadgee Aboriginal Shire Council, Meridian Urban and Circ Design.



*Land of the Traditional Owners: Land of the Ganalidda, Waanyi, Garrawa and Yunjulla people.*

# Wendy Chadwick Encouragement

Sponsored by



Dedicated to a better Brisbane

## COMMENDATION

Logan City Council

## PROJECT

Logan Centres Implementation Program



The Logan Centres Implementation Program is an outstanding example of in-house planning excellence, demonstrating skill, clarity of purpose, and effective coordination across multiple sites and a diverse range of stakeholders. The Judges recognised the complexity of the planning, design, delivery, and ongoing implementation, and commended the team for successfully navigating these challenges.

Central to the project's success was a strong focus on community engagement, which informed both delivery and ongoing implementation.



The program has achieved excellent placemaking outcomes, maximising impact within available budgets and setting a high standard for integrated, community-focused urban planning.

Congratulations Logan City Council.



*Land of the Traditional Owners: Land of the Yuggera and Yugambah speaking people, as key Traditional Custodians of Logan City.*

# Category

## Wendy Chadwick Emerging Planner Bursary

Sponsored by



Dedicated to a better Brisbane

### WINNER

**Teah Hammet**  
**PIA (Assoc.)**

Teah Hammet is an exceptional emerging planner whose academic achievements and commitment to the planning profession set her apart. Graduating with First Class Honours in Urban and Regional Planning and Distinction in Environmental Science, Teah has consistently achieved excellence throughout her studies, receiving First Place Certificates of Excellence in every year of her degree. Her honours thesis explored the intersection of climate risk and regional planning, reflecting both her intellectual capability and her passion for addressing some of the most pressing challenges facing our communities.

Beyond her academic success, Teah has been deeply engaged with the planning profession and the wider community. She has served in leadership roles with the QUT Planning Students Association and currently holds the position of Student Lead



on the Planning Institute of Australia's Queensland Emerging Planners Committee. She has represented her peers nationally and internationally, from contributing to the TU Delft Planning and Design for the Just City Summer School in the Netherlands to engaging with local communities on climate resilience initiatives in Queensland. Teah has also worked across private practice, consultancy, and advocacy roles - building practical experience in planning, policy, and community engagement.

Amongst a group of incredibly strong candidates, the judges were particularly impressed by Teah's ability to combine her outstanding academic record with a genuine commitment to fostering



connection, leadership, and knowledge-sharing among her peers. Her dedication to creating safe and supportive spaces for emerging planners, as well as her passion for using planning as a tool to achieve equitable and climate-conscious outcomes, shone through in her application.

Teah is an inspiring recipient of the Wendy

Chadwick Emerging Planning Bursary, and the judges are confident that this award will further strengthen her ability to contribute to both the profession and the communities she serves. The judges also commend the strong field of applicants this year and encourage those not selected to renominate in future years.

Congratulations Teah.

# Category

## Planning Champion

Sponsored by



### AWARD

#### Anna Campbell

Anna Campbell is a tireless advocate for more walkable places and cities. In her work as Executive Officer of Queensland Walks and a long-time volunteer leader, Anna has made a significant contribution to Queensland's urban and regional environments. Her work spans community engagement, transport planning, public safety, public health, urban heat, gender equity and city-making – raising awareness of planning issues and empowering communities to shape safer, more accessible public spaces.

Anna's leadership in this space has helped elevate walking as a central component of sustainable urban planning, and her influence continues to shape policy, infrastructure and community engagement across the state.



Her work includes advocating for:

- positioning walking as a key legacy opportunity for the Brisbane 2032 Olympic Games;
- inclusive design, through her work on the Parliamentary e-mobility inquiry;
- safer public spaces including contributing to the Safe Cities, Safe Streets Toolkit;
- encouraging the everyday person to become actively involved in the conversation and advocate for safer neighbourhoods – as demonstrated by her support of Janes Walk; and
- processes which help communities understand how to advance these aims.



The judges were particularly impressed by Anna's commitment to her core values of inclusiveness and fairness, and her consistently positive tone in her advocacy and policy work.

It is clear that she has strong capability and awareness of how she needs to position her work to get maximum impact.

Congratulations Anna.



# Category

## Planning Champion

Sponsored by



### COMMENDATION

#### Brett Dascombe

Brett Dascombe is a senior geography teacher at Wavell State High School in Brisbane.

Brett has adopted innovative teaching practices that have made a profound impact on planning education in Queensland, transforming geography education by integrated advanced geospatial technologies – such as GIS, drones and remote sensing – into the classroom, preparing students for careers in urban planning, environmental management and spatial analysis – the number of planners which have been born out of Brett's classroom belies the passion and inspiration he brings to his work and his students.

Brett's work exemplifies the values of PIA through his commitment to educational excellence, innovation and positive community impact.



His work bridges the gap between education and the planning profession, inspiring the next generation of planners and contributing meaningfully to the discipline through real world engagement and advocacy.

Congratulations Brett.



# Category

## Emerging Planner of the Year

Sponsored by

**Planned  
cover** risk solutions

### AWARD

**Katrina Christensen  
MPIA**

This year's winner of the Emerging Planner of the Year award, Katrina Christensen, is a humble powerhouse making a remarkable impact on regional planning in Queensland. Based in Toowoomba, Katrina has made valuable contributions to development assessment, policy development and project management. She has led critical work on regional planning - including supporting Toowoomba's new Planning Scheme, Local Housing Action Plan and renewable energy framework.

She has introduced innovative engagement models and collaborative approaches that have been adopted across her organisation, driving cultural change and strengthening team collaboration - an impressive achievement for an early-career planner.



Katrina combines technical excellence with a deep commitment to mentoring and advocacy. She contributes actively through the Queensland Emerging Planners Committee and the Policy and Advocacy Committee, while also mentoring students and graduates and championing regional pathways into the profession.

With dual qualifications in planning and law, alongside project management and leadership training, Katrina is deeply committed to professional growth and to shaping stronger outcomes for communities. Her passion for planning is



clearly evident, which she successfully balances with passions and accomplishments in other endeavours.

Katrina's commitment to the profession is unwavering, and the judges believe she is truly deserving of the title 'Emerging Planner of the Year'.

Congratulations Katrina.



# Category

## Emerging Planner of the Year

Sponsored by



### COMMENDATION

#### Meg Luton MPIA

Meg has made an extraordinary impact so early in her career, with her leadership, advocacy, and commitment to the profession already spanning schools, universities, regions and industry. Through initiatives like the Regional Emerging Planner Catchup Series, the NextGen Planner Summit and the Relocating to the Regions project, Meg is a strategic connector and a visible role model for emerging planners across Queensland.

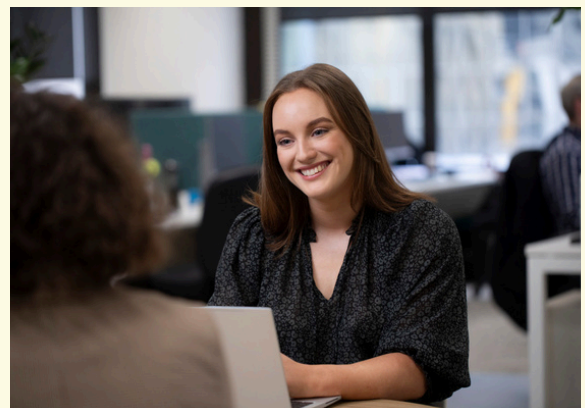
Her structured and inclusive leadership as Co-Convenor of the Queensland Emerging Planners, along with her active involvement in the Future Leaders and DEI Committees, has helped to create opportunities and foster a stronger, more supportive profession. The judges were particularly impressed by Meg's statewide reach, her ability to engage with students and regional practitioners alike, and her clear passion for building pathways for the



the next generation of planners.

Meg demonstrates the qualities of a true future leader of the profession, and the judges are excited to see her career continue to flourish.

Congratulations Meg.



# Category

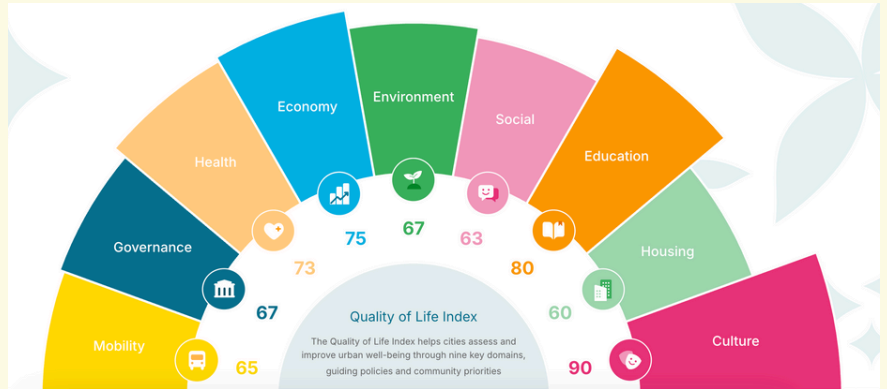
## Overall Winner

### AWARD

City of Logan

### PROJECT

UN-Habitat Quality of Life Pioneer City Initiative - City of Logan



The UN-Habitat Quality of Life Pioneer City Initiative by Logan City Council sets a new standard for evidence-led, socially sustainable planning aimed at tackling planning and social issues in the local government area. As one of only ten global pioneer cities selected by UN-Habitat, Logan co-designed a dual-layer Quality of Life Index that fuses internationally recognised benchmarks with locally defined priorities, ensuring global comparability while centering community needs.

Using advanced datasets and tools, Logan City Council established a 2024 baseline and live dashboards across nine wellbeing domains. This rigorous evidence base revealed precise, actionable insights, enabling Council to target interventions that

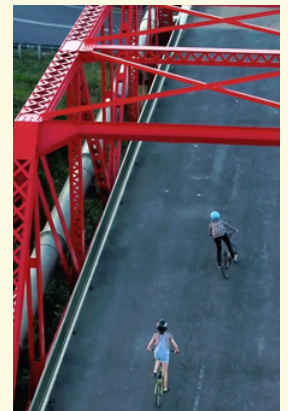


improve access, safety, equity and cohesion through its corporate planning and budget processes. The judges commended Council for this deeply data-led and visionary approach to planning, that balances a robust evidence base with human-centric decision making.

The impact of the initiative is significant - embedded in Council's long-term Transform Logan Strategy, with a

clear methodology, affordable data choices and transferable design that make it a practical blueprint for other planners to adopt - throughout Australia and the world.

For its originality, rigour and long-term vision for placing quality of life at the heart of evidence-based decision-making, the judges highly commend Logan City Council for this ground-breaking initiative.



Congratulations City of Logan.

# Nominations

## 2025 PIA Queensland Award Nominations

**A metropolitan geography of young heads of households: the case of Greater Brisbane**  
Sophia Dow - The University of Queensland

**A new statutory planning framework for sustainable access and management of Gold Coast waterways**  
Gold Coast Waterways Authority and Meridian Urban

**Accommodation Hotel Incentives Package**  
Sunshine Coast Regional Council

**Accounting for Compound Risk in Resilient Regional Planning for South East Queensland**  
Teah Hammet  
Queensland University of Technology

**Advocacy which led to Australia's First Faith-Land Housing Reform - Yes in Faith's Backyard (YIFBY)**  
Therefor Group, QShelter and Catholic Archdiocese

**AI Meets Planning: Automating the Voice of the Community (Robina Central Planning Review)**  
City of Gold Coast

**Anna Campbell**  
**Archerfield Wetlands Parkland**  
Brisbane Sustainability Agency

**Benchmarking and Innovation: Delivering informed improvement, curating a performance culture, and refining process**  
Therefor Group

**Botanix Master Plan**  
Mewing Planning Consultants, in partnership with Fiteni, ASPECT Studios, Arkhefield, Urban Enquiry and Fourfold Studio

**Brett Dascombe**  
**Cairns City Precincts**  
Cairns Regional Council, SMEC and Pilot Places

**Challenges Influencing Landcover Change on Cylinder Beach**  
Mei Mei Bolland  
Wavell State High School

**Chambers Flat - Logan Reserve, a Growing Population**  
Jinwoo Bang  
Wavell State High School

**City of Moreton Bay Changing Places Network Plan**  
City of Moreton Bay and CRED Consulting

**Community benefit and social licence in the Queensland planning framework**  
Department of State Development, Infrastructure and Planning

**Community Indoor Tennis Centre Development Proposal**  
Stephan Weitkus  
Queensland University of Technology

**Cylinder Beach - Land Cover Change & System Health**  
Grace Langton  
Wavell State High School

**Dalby Cultural Centre and Thomas Jack Park Precinct Stakeholder and Community Engagement**  
Fourfold Studio

**Doomadgee Futures Planning Prospectus**  
Doomadgee Aboriginal Shire Council, Meridian Urban and Circ Design

**Felix Wong PIA (Assoc.)**

**Francis Nguyen PIA (Assoc.)**

**Future South Bank Master Plan**  
Urbis Ltd, South Bank Corporation

**Integrated Lifestyle Infrastructure Network Plan**  
Logan City Council

**Investigating demographic challenges at Chamber's Flat-Logan Reserve, Queensland**  
Smriti Pillai  
Ormiston College

**Katrina Christensen MPIA**

**Kedron Brook Riverine Recovery**  
Healthy Land and Water, Bligh Tanner and Fourfold Studio

**Logan Centres Implementation Program**  
Logan City Council

**Meg Luton MPIA**

**Modelling tomorrow: Transformative technology guiding Brisbane's future**  
Brisbane City Council, City Planning and Design, Strategic Planning section

**Mount Ninderry Environment Reserve Landscape Plan: A co-design journey with the Kabi Kabi Peoples**  
Sunshine Coast Council

# Nominations

## 2025 PIA Queensland Award Nominations

**NextGen Planner Summit 2025**  
**2024-2025 Queensland Emerging Planner Committees (Event Led by; Lucy O'Malley, Cameron See, Meg Luton and Renee Livingstone)**

**Pinkenba State School Redevelopment Concept Plan**  
Morgan Oiso and Anlin Tso - St. Laurence's College

**Planning Sustainable Places: Brunswick Street Mall**  
Isabella Blak - Indooroopilly State High School

**Pomona Place Plan Pilot**  
Noosa Council with Archipelago and CRED Consulting

**Public Space and the Sustainable Development Goals – Inclusion, Safety, Culture and Nature**  
Joanne Dolley, Keiran Hardy, Tony Matthews - Griffith University

**Read it, Set, Play! Designing a Social Story Kit to Support Autistic Children Visiting Brisbane Playgrounds**  
Krizia Alessandra Sanchez Mendoza  
Griffith University

**RedeMont Planning and Environment Team**  
**Regional Land Use Prioritisation Project**  
Department of State Development, Infrastructure and Planning and ARUP

**Reshma Gopal PIA (Assoc.)**

**Scenic Rim Agricultural Industrial Precinct (SRAIP) - Strategic Planning for a resilient, diversified agricultural industry and circular economy**  
Kalfresh Pty Ltd and Epic Environmental Pty Ltd - A Montrose Environmental Company

**Scenic Rim Agricultural Industrial Precinct (SRAIP) Project - Pioneering Circular Economy Solutions for Climate-Resilient Agriculture**  
Kalfresh Pty Ltd and Epic Environmental Pty Ltd - A Montrose Environmental Company

**Snell Street, Toowoomba - Social and Affordable Housing Project**  
Therefor Group and The Salvation Army

**Social and affordable housing - A risk based approach to assessment**  
Department of State Development, Infrastructure and Planning

**Social Housing Project at Inala**  
Department of Housing and Public Works with Baber Studio

**Sophia Dow PIA (Assoc.)**

**Strategies Urban Planners adopt to Enhance Sustainable Livelihoods in Rapidly Urbanising Regions while Maintaining Environmental Sustainability**  
Kylie Tan - The University of Queensland

**Sunshine Coast Council Marcoola Affordable Housing Project**  
Sunshine Coast Council

**Teah Hammet PIA (Assoc.)**

**The Synergy Project - Applying systems thinking to design tropical urban villages in Cairns, Queensland.**  
Katie Pearce, University of Queensland

**The wellbeing impacts of climate-disaster induced relocation: The case of Grantham, Australia**  
Georgia Bergin  
Queensland University of Technology

**Tom Kennedy PIA (Assoc.)**

**Towards 2050 Shaping Cairns Growth Strategy**  
Cairns Regional Council, Leisa Prowse Consulting

**UN-Habitat Quality of Life Pioneer City Initiative - City of Logan**  
City of Logan

**Urban Climate Education: an international study of built environment higher education**  
Olivia Herrmann  
University of the Sunshine Coast

**Urban Design Portfolio: Reimagining Victoria Street, West End**  
Reshma Gopal, Adam Wright, Samuel Carrick and Mattisse Karsons

**UVR Exposure in Sunshine Coast Playgrounds**  
Holly Carvolth  
University of the Sunshine Coast

# Nominations

## 2025 Award Nominations

### **Washpool Creek Master Plan**

Tract Consultants and Bundaberg Regional Council

### **Waterway condition assessment**

City of Moreton Bay and Alluvium Consulting

### **Wilbur Street Youth Centre**

Logan City Council, Queensland Government, Australian Government and Rekon Youth Org.

### **Wujal Wujal Master Plan Review Project**

Wujal Wujal Aboriginal Shire Council, Meridian Urban and Water Technology

### **Wynnum Strategic Plan**

Bayley McNamara, Abbey Moore, Andre Lowe, Harriet Alexander-Bates, Isabella Steffen, Jonty King, Michael Pendergast, Queensland University of Technology

### **Wynnum Strategic Plan**

Gabriella Camilleri, Isla Jenkins, Oli Manias, Riley Burke, Teah Hammet, Toby Fiorillo & Victoria Sturgeon Queensland University of Technology

### **Yarrabilba - Planning for Population Change and Challenges**

Grace Langton - Wavell State High School

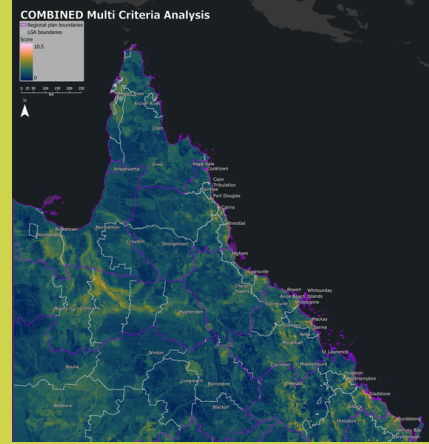
### **Your Traditional Character Building Guidelines**

City of Moreton Bay

# Overall Winners

## PIA Queensland Overall Winners 1987 – 2025

1987	Redland Shire Strategic Plan and Development Plans	2007	Affordable Housing in the Kelvin Grove Urban Village
1988	Mackay/Capricornia Section - Great Barrier Reef Marine Park	2008	Northern Growth Corridor Social Infrastructure Plan Draft - 2021
1989	Ipswich Town Planning Scheme	2009	Identifying and incorporating indigenous landscape values into regional planning process
1990	Norman Creek Action Plan	2010	Cairns Transit Network
1991	2040 a message from the future	2011	Engaging in the Cauldron - Blackwater and Moranbah
1992	Cairns Marine Parks Zoning Plan	2012	Planning for Stronger, More Resilient Floodplains
1993	The Ipswich Heritage Program	2013	State Assessment Referral Agency (SARA)
1994	Pine Rivers Green Plan	2014	Climate Change Adaptation Plan – Choiseul Bay Township, Solomon Islands
1995	Draft Mulgrave Shire Town Planning Scheme	2015	Gasworks@Newstead Riverpark
1996	Outback Queensland Regional Tourism Strategy 1997 Northern Wastewater Strategy	2016	Tropical Urbanism - Cairns City Image Study
1998	Gold Coast City Bushfire Management Strategy	2017	Urban Squeeze Radio Show
1999	Environmental Issues Associated with Integrated Catchment Management into Local Government Planning Schemes	2018	Gamification of Planning Education: A co-operative multi-player game for urban planning education
2000	Far North Queensland Regional Plan	2019	The Spit Master Plan
2001	State Coastal Management Plan - Queensland's Coastal Policy	2020	Isaac Region Planning Scheme & Coastal Planning Provisions
2002	Towards Sustainability - An Integrated Local Area Plan for Nudgee, Banyo and Nudgee Beach	2021	Logan Village Place to Play Stakeholder Engagement
2003	Our Future Your Say: Greenspace Series	2022	The Standard
2004	Planning for the future of the Great Barrier Reef Marine Park: The Representative Areas Program	2023	New Ipswich Planning Scheme (Ipswich Plan 2024)
2005	SEQ Regional Plan and Infrastructure Plan	2024	The Next Australian City: The Suburban Evolution
2006	Douglas Shire Planning Trilogy	2025	UN-Habitat Quality of Life Pioneer City Initiative - City of Logan



# NE



Planning  
Institute  
Australia